

# *Legendary*

## **AUTO INTERIORS LTD.**



# Mopar

## **1970-74 E-BODY**

2026 First Quarter



[www.legendaryautointeriors.com](http://www.legendaryautointeriors.com)

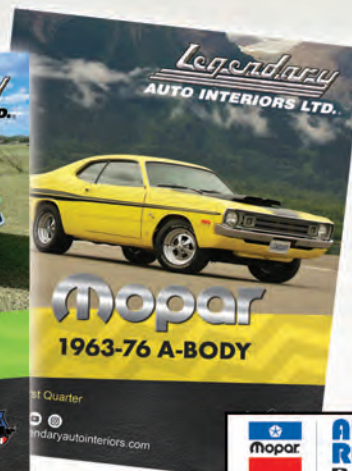
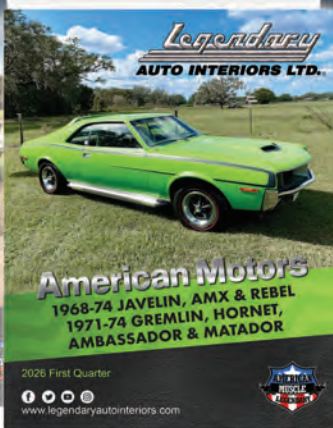
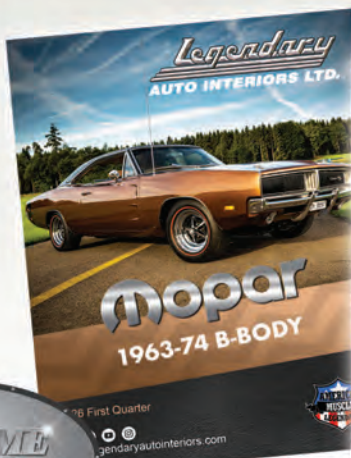






# OVER 225 DIFFERENT INTERIOR STYLES OFFERED FOR CHRYSLER & AMC

1957-76 MOPAR A,B,C,E & F-BODY, 1963-68 DODGE A-100 VAN  
1973-79 DODGE TRUCK & 1968-74 AMC JAVELIN/AMX



[WWW.LEGENDARYAUTOINTERIORS.COM](http://WWW.LEGENDARYAUTOINTERIORS.COM)



## A Special Message from the President...

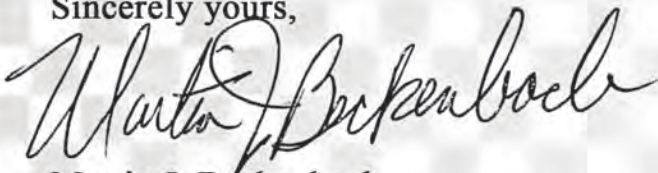
For over 4 decades, Legendary Auto Interiors, Ltd has been committed to providing the automotive restoration industry and enthusiast with the world's highest quality soft trim products and services. Available from the most authentic "As Original" interiors to the most extreme "One of a Kind" Custom Resto-Mod interiors, Legendary has been relied upon and Legendary has delivered!

This past decade has been extremely exciting! We continue to set the bar and truly lead by example, establishing industry expectations and standards. Introducing innovative tools such as our exclusive "Custom Design Center", "LegendImagery™" and "Sample Request Center". Whether your preference is "As Original" or a creation of your own vision, we have created a destination where you can let your imagination lead the way! Our commitment to developing and maintaining innovative solutions is a dedicated process that will continue to provide you with great products, service and help grow our restoration industry.

We are looking forward to a very productive future. As owner and President and from all of our proud team here at Legendary Auto Interiors LTD, we would like to thank you for allowing us the opportunity and the privilege of being your automotive soft trim supplier.

Thank you once again for your business, interest and support!

Sincerely yours,



Martin J. Beckenbach  
President

**PRODUCT DISCLAIMER:** Products listed in this catalog have been reproduced and/or remanufactured to resemble original products. All manufacturers names and descriptions are used for reference purposes only. It is therefore understood that the products listed in this catalog are in fact REPRODUCTIONS unless specified otherwise. All parts described and offered for sale in this publication as NOS (New Old Stock) are new parts/materials manufactured by or for Chrysler LLC and General Motors Corporation.

All literature produced by and directly related to Legendary Auto Interiors Ltd., is protected under copyright laws.  
All literature cannot be reproduced for any reason unless prior permission is obtained.

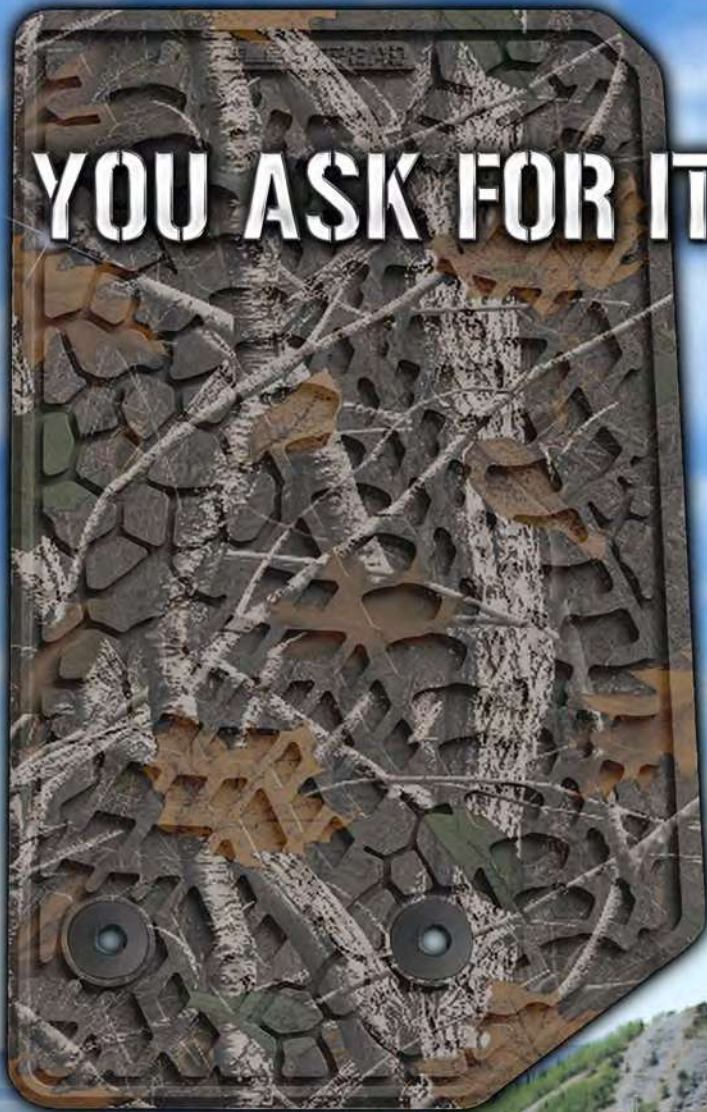


LEGENDARY AUTO INTERIORS LTD., COPYRIGHT 2026



# **FLEXTREAD®**

**YOU ASK FOR IT...WE DELIVERED!!**



**YOU ASK FOR IT...WE DELIVERED!!**





\*\*\*

Flextread is providing the most innovative  
molded floormats in the industry  
**RIGHT HERE AT HOME!**

All products are 100% assembled, designed  
and made in the U.S.A.

\*\*\*



\*\*\*

**THE NEXT GENERATION IN FLOORMATS™**

\*\*\*

**FLEXTREAD®**

[www.flextreadmats.com](http://www.flextreadmats.com)





# BOOTMAT COLORS



001 - Black



007 - Dark Blue



011 - Medium Blue



018 - Bright Red



020 - Red



051 - Lime Green



023 - Tan



031 - Maroon



050 - Turquoise



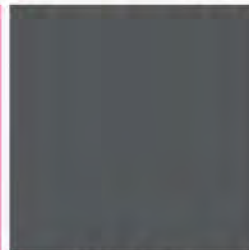
054 - Purple



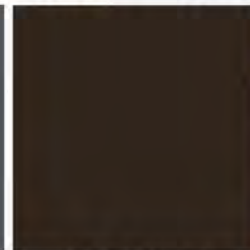
057 - Dark Olive Green



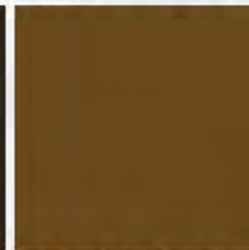
074 - Pink



079 - Grey



098 - Brown



129 - Dark Saddle



132 - Gold

## CAMOUFLAGE



200 - Rugged Woods



202 - Cyberflage

**FLEXTREAD LLC**  
**1-833-700-3539**  
**WWW.FLEXTREADMATS.COM**

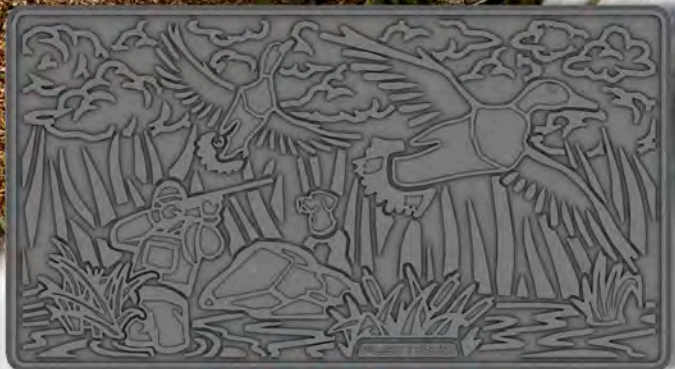




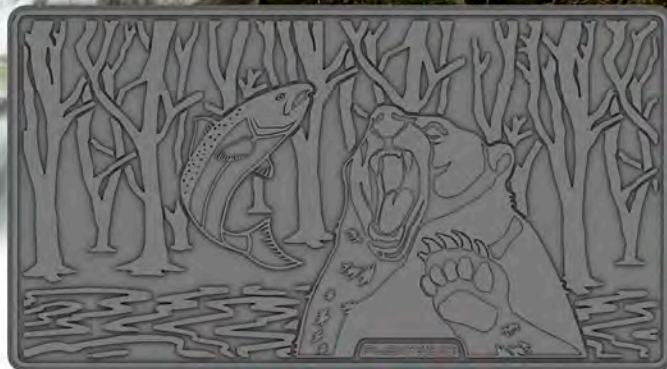
**PATENTED**

# **SCENERY BOOT MATS**

**MANY KOOL SCENES  
AVAILABLE AND  
MORE COMING SOON!**



**DUCK SCENE**



**BEAR SCENE**



**4X4 SCENE**



**TURKEY SCENE**



**FISHING SCENE**



**WHITETAIL SCENE**



**EQUINE SCENE**



**SCORCHED EARTH &  
TIRE TRACK SCENE**



**TREE SCENE**

## **FLEXTREAD**

**1-833-700-3539 EXT. 222  
WWW.FLEXTREADMATS.COM**



# INTRODUCING THE BEST WARRANTY COVERAGE IN THE INDUSTRY!!

## Limited Lifetime Warranty

**Limited Warranty** - Legendary Auto Interiors Ltd. (called "we") warrants that the products it manufactures will be free of defects in materials and workmanship from the date it is first purchased by the retail purchaser. A retail purchaser is any person or any entity who or which purchases the product but does not do so for resale.

**Warranty Information** - Legendary Auto Interiors, Ltd proudly stands behind all of the products and services we offer. All Legendary manufactured sewn interior soft trim products are backed by an exclusive Limited Lifetime Warranty for as long as you own your car. In addition, we offer a 5-year warranty on all of our molded, die-electrically heat sealed and exterior soft trim products. Legendary Auto Interiors, Ltd also offers a huge selection of interior components, which we warranty for a maximum of 1 year in accordance with the original manufacturers product warranty.

**Obligation** - If a product is not as warranted, we will either repair or, at our option, replace the defective product. If repair or replacement is not possible within a reasonable time, we will refund the purchase price.

**Exclusions from Warranty** - This Warranty does not apply to:

1. Conditions resulting from the product being altered, abused, misused, damaged by accident or negligence; being repaired without our authorization; or not being maintained properly in accordance with written instructions provided with the product.
2. Conditions resulting from ordinary wear and tear or including, without limitation, exposure to ultraviolet light.
3. Conditions resulting from the use of Specialty Run Materials (SRM) supplied by the purchaser.
4. Conditions resulting from improper installation by the purchaser or anyone else outside of our control.

**Disclaimer** - EXCEPT FOR THE LIMITED WARRANTY DESCRIBED ABOVE, WE OFFER NO WARRANTIES, EXPRESSED OR IMPLIED, AND OTHER THAN THE LIMITED WARRANTY EXPRESSLY CONTAINED HEREIN, WE HEREBY DISCLAIM ANY AND ALL WARRANTIES, INCLUDING WITHOUT LIMITATION ANY IMPLIED WARRANTIES OF MERCHANTABILITY, SUITABILITY OR FITNESS FOR A PARTICULAR PURPOSE. Some states do not allow limitations on how long an implied warranty lasts, so the above limitation may not apply to you.

**Exclusion of Incidental and Consequential Damages** - WE ARE NOT RESPONSIBLE FOR ANY INCIDENTAL OR CONSEQUENTIAL DAMAGES RESULTING FROM BREACH OF THE LIMITED WARRANTY DESCRIBED ABOVE. Some states do not allow the exclusion or limitation of incidental or consequential damages, so the above limitation or exclusion may not apply to you.

**Other Legal Rights** - This Warranty gives you specific legal rights, and you may also have other rights which vary from state to state.

**What To Do If You Have A Warranty Claim** - If you have a warranty claim, you must call our sales office for further assistance. Once given a return authorization number please indicate the number on the box and return the product to our facility; Legendary Auto Interiors 121 West Shore Blvd, Newark, NY 14513. We will perform our warranty obligation within a reasonable amount of time after the returned product arrives at our facility.

Eff. 08/01/2024



**PRODUCT DISCLAIMER:** Products listed in this catalog have been reproduced and/or remanufactured to resemble original products. All manufacturers names and descriptions are used for reference purposes only. It is therefore understood that the products listed in this catalog are in fact REPRODUCTIONS unless specified otherwise. All parts described and offered for sale in this publication as NOS (New Old Stock) are new parts/materials manufactured by or for Chrysler Group LLC and General Motors Corporation.

**LEGENDARY AUTO INTERIORS LTD., COPYRIGHT 2026**

All literature produced by and directly related to Legendary Auto Interiors Ltd., is protected under copyright laws.  
All literature cannot be reproduced for any reason unless prior permission is obtained.



# Vinyl Color Chart



Black



Metallic Charcoal



White



Bright Blue



Bright Blue



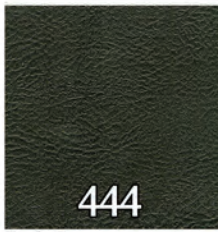
Dark Blue



Lagoon Blue



Dark Metallic Green



Dark Green



Light Green



Jade Green



Dark Metallic Green



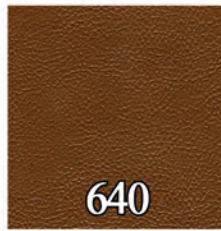
Burnt Orange



Red



Bright Orange



Bronze



Brown



Gold



Brown



Ember Gold



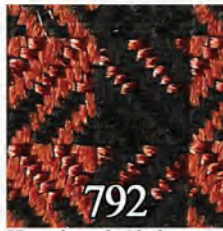
Tan



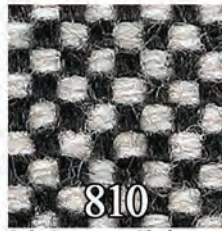
# Cloth Color Chart



Houndstooth Cloth  
Black & White



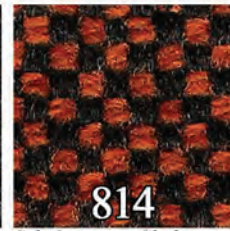
Houndstooth Cloth  
Black & Burnt Orange



Salt & Pepper Cloth  
Black & White



Salt & Pepper Cloth  
Black & Charcoal



Salt & Pepper Cloth  
Black & Orange



Salt & Pepper Cloth  
Black & Blue



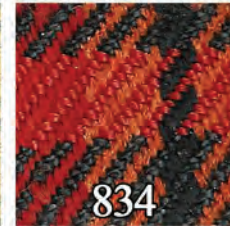
Salt & Pepper Cloth  
Black & Green



Plaid Cloth  
Black & White



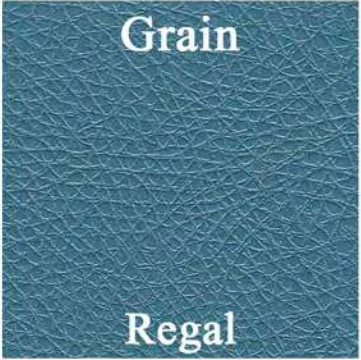
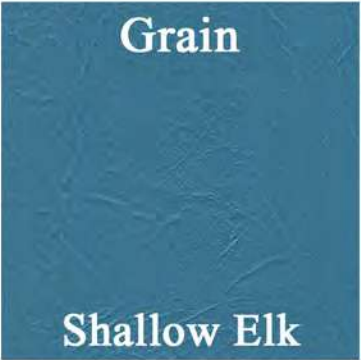
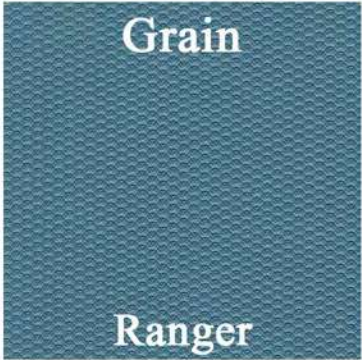
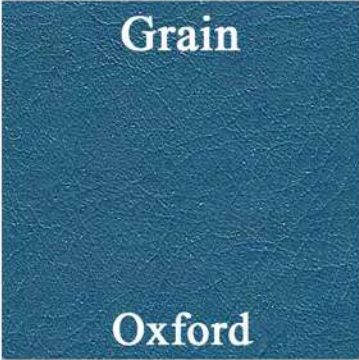
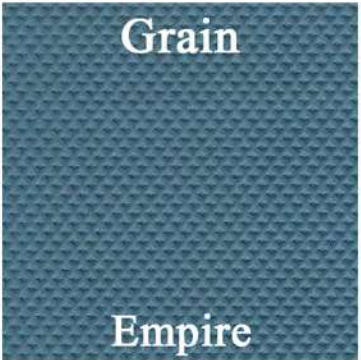
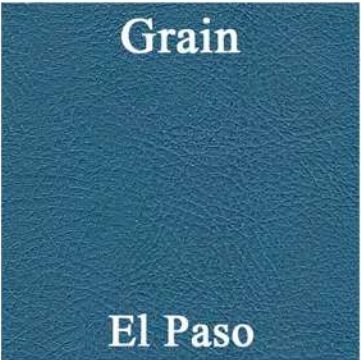
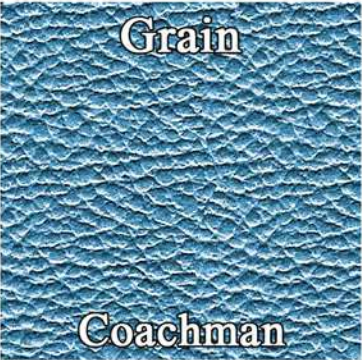
Plaid Cloth Green



Plaid Cloth  
Black & Orange



# Vinyl Grain Chart





# Vinyl Yardage

The following grains are available off the roll and come in 1/2 yard increments **ONLY**

## Ascot

VVYDASCOT(C) (1 Yard).....\$64.00/yd.

VV1/2YDASCOT(C) (1/2 Yard).....\$32.00/ea.

Available colors: 100



## Bison

VVYDBISON(C) (1 Yard).....\$64.00/yd.

VV1/2YDBISON(C) (1/2 Yard).....\$32.00/ea.

Available colors: 100, 204, 314, 510, 606, 610



## Coachman

VVYDCOACHMAN(C) (1 Yard).....\$64.00/yd.

VV1/2YDCOACHMAN(C) (1/2 Yard).....\$32.00/ea.

Available colors: 100, 130, 140, 200, 330, 338,  
340, 432, 434, 452, 528, 540, 550, 560, 640, 650,  
656, 664, 666, 670



## Cologne

VVYDCOLOGNE(C) (1 Yard).....\$64.00/yd.

VV1/2YDCOLOGNE(C) (1/2 Yard).....\$32.00/ea.

Available colors: 100, 102, 10A, 202, 318, 320,  
332, 414, 420, 430, 520, 526, 614, 620, 636



## Doeskin

VVYDDOESKIN(C) (1 Yard).....\$64.00/yd.

VV1/2YDDOESKIN(C) (1/2 Yard).....\$32.00/ea.

Available colors: 100, 104, 200, 206G, 508G



## Dorchester

VVYDDORCHESTER(C) (1 Yard).....\$64.00/yd.

VV1/2YDDORCHESTER(C) (1/2 Yard).....\$32.00/ea.

Available colors: 100, 202



## El Paso

VVYDELPASO(C) (1 Yard).....\$64.00/yd.

VV1/2YDELPASO(C) (1/2 Yard).....\$32.00/ea.

Available colors: 100, 200



## Krinkle

VVYDKRINKLE(C) (1 Yard).....\$64.00/yd.

VV1/2YDKRINKLE(C) (1/2 Yard).....\$32.00/ea.

Available colors: 100, 154



## Madrid

VVYDMADRID(C) (1 Yard).....\$64.00/yd.

VV1/2YDMADRID(C) (1/2 Yard).....\$32.00/ea.

Available colors: 100G, 202G, 204G, 210G, 220G,  
230G, 235G, 239G, 240G, 310G, 325G, 331G, 333G,  
334G, 338G, 342G, 343G, 351G, 369G, 380G, 415G,  
420G, 421G, 424G, 429G, 448G, 460G, 465G, 469G,  
501G, 511G, 513G, 520G, 631G, 635G, 640G, 642G,  
645G, 650G, 651G, 657G, 658G, 670G, 679G, 683G,  
690G, 694G, 695G, 697G, 709G, 710G



## Oxen

VVYDOXEN(C) (1 Yard).....\$64.00/yd.

VV1/2YDOXEN(C) (1/2 Yard).....\$32.00/ea.

Available colors: 100



## Oxford

VVYDOXFORD(C) (1 Yard).....\$64.00/yd.

VV1/2YDOXFORD(C) (1/2 Yard).....\$32.00/ea.

Available colors: 100, 200, 264, 360, 450



## Ranger

VVYDRANGER(C) (1 Yard).....\$64.00/yd.

VV1/2YDRANGER(C) (1/2 Yard).....\$32.00/ea.

Available colors: 100, 200



## Shallow Elk

VVYDSHALLOWELK(C) (1 Yard).....\$64.00/yd.

VV1/2YDSHALLOWELK(C) (1/2 Yard).....\$32.00/ea.

Available colors: 100, 156, 200, 202G, 230G, 341



## Sierra

VVYDSIERRA(C) (1 Yard).....\$64.00/yd.

VV1/2YDSIERRA(C) (1/2 Yard).....\$32.00/ea.

Available colors: 100G, 102G, 200G, 209G, 319G,  
528G, 684G, 688G



**1 YARD AND MORE IS SHIPPED OVERSIZED 1**

## Specialty Grain Vinyl Yardage

All grain/color combinations not listed above can be produced upon request.  
Available in 1/2 yd or 1yd sheets **ONLY**

### 1/2 Yard (54"x18")

TTMOLDSMALL.....\$36.00/ea.

\* Need to specify grain and color

### 1 Yard (54"x36")

TTMOLDXL.....\$96.00/ea.



\* Need to specify grain and color










# UPHOLSTERY AND TRIM ACCESORIES

 [facebook.com/legendaryautointeriors](https://facebook.com/legendaryautointeriors)  
 [twitter.com/legendaryautoin](https://twitter.com/legendaryautoin)

 [www.legendaryautointeriors.com](http://www.legendaryautointeriors.com)  
 [instagram.com/legendaryautointeriorsltd](https://instagram.com/legendaryautointeriorsltd)  
 [youtube.com/user/legendaryauto](https://youtube.com/user/legendaryauto)



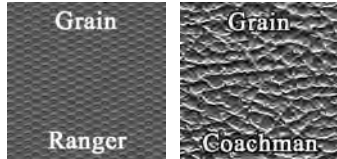
# Dodge & Plymouth E-Body

## 1970 BARRACUDA & 'CUDA

This Legendary product features as-original  
Ranger grain inserts with Coachman grain skirts.

### (C) COLOR CODES:

- (100) - Black [Trim Code H6X9]  
 (200) - White [Trim Codes H6XW, H6BW, H6EW, H6FW]  
 \*H6XW - White w/ Black Carpet  
 \*H6BW - White w/ Blue Carpet  
 \*H6EW - White w/ Red Carpet  
 \*H6FW - White w/ Green Carpet  
 (338) - Bright Blue [Trim Code H6B5]  
 (434) - Green [Trim Code H6F8]  
 (550) - Red [Trim Code H6E4]  
 (657) - Bronze (640) / Brown (656) [Trim Code H6T5]



Front Buckets .....	AA70CB00010(C)
100, 200, 338, 434, 657.....	\$597/pr.
550.....	\$627/pr. (L4)

\*Molded foam is available for this model. See the "Molded Foam" section in this catalog.

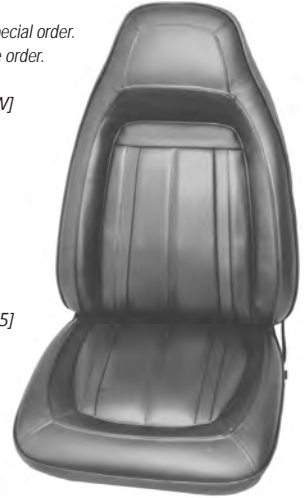
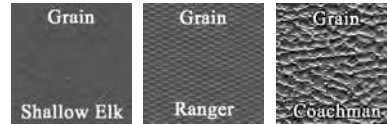
Hardtop Rear Bench.....	AA70CB00048(C)
Convertible Rear Bench .....	AA70CB00056(C)
100, 200, 338, 434, 657.....	\$403/ea.
550.....	\$423/ea. (L4)

## 1970 BARRACUDA GRAN COUPE

This Legendary product features as-original heat sealed Shallow Elk grain inserts  
& accent belts with Ranger grain inset panel & Coachman grain skirts.

### (C) COLOR CODES:

- (100) - Black [Not a factory option]  
 \*Black was not originally offered, but may be purchased as a special order.  
 Available only as a prepaid, non-refundable and non-returnable order.  
 (154) - Charcoal [Trim Code P6A8]  
 (200) - White [Trim Codes P6XW, P6BW, P6EW, P6FW]  
 \*P6XW - White w/ Black Carpet  
 \*P6BW - White w/ Blue Carpet  
 \*P6EW - White w/ Red Carpet  
 \*P6FW - White w/ Green Carpet  
 (338) - Bright Blue [Trim Code P6B5]  
 (434) - Green [Trim Code P6F8]  
 (540) - Burnt Orange [Trim Code P6K4]  
 (550) - Red [Trim Code P6E4]  
 (657) - Bronze (640) / Brown (656) [Trim Code P6T5]  
 (660) - Gold [Trim Code P6XY]



Front Buckets .....	AA70CBD0010(C)
*100, 154, 200, 338, 434, 540, 657 .....	\$620/pr.
550, 660 .....	\$651/pr. (L4)

\*Metal emblems not included.

\*Molded foam is available for this model. See the "Molded Foam" section in this catalog.

Hardtop Rear Bench.....	AA70CBD0040(C)
Convertible Rear Bench .....	AA70CBD0050(C)
*100, 154, 200, 338, 434, 540, 657 .....	\$424/ea.
550, 660.....	\$445/ea. (L4)

## 1970 BARRACUDA GRAN COUPE "CLOTH STYLE"

This Legendary product features as-original  
Houndstooth cloth inserts with Coachman grain skirts.

### (C) COLOR CODES:

- (791) - Black & White Houndstooth Cloth (790) / Black (100)  
 with Red insert welt [Trim Code P5X9]  
 (793) - Black & Burnt Orange Houndstooth Cloth (792) / Burnt Orange (540)  
 with Bright Orange insert welt [Trim Code P5K4]



Front Buckets .....	AA70CBC0010(C)
793.....	\$1038/pr. (L1)
791.....	\$1038/pr. (L4)

\*Molded foam is available for this model. Please see the "Molded Foam" section in this catalog.

Hardtop Rear Bench.....	AA70CBC0040(C)
793.....	\$681/ea. (L1)
791.....	\$681/ea. (L4)

## 1970-71 BARRACUDA, 'CUDA & GRAN COUPE "LEATHER STYLE"

This Legendary product features as-original  
Leather inserts with Coachman grain skirts.

### (C) COLOR CODES:

- (100) - Black [Trim Codes PRX9, SRX9] - 1970-1971  
 (200) - White [Trim Code PRXW] - 1970 only  
 (656) - Brown [Trim Code PRT5] - 1970 only  
 (664) - Brown [Trim Codes PRT7, SRT7] - 1971 only  
 (666) - Ember Gold [Trim Code PRY3] - 1971 only  
 \*\*\*1970 Barracuda, 'Cuda, Gran Coupe Trim Codes - PRX9, PRXW, PRT5  
 \*\*\*1971 Barracuda, 'Cuda Trim Codes - SRX9, SRT7  
 \*\*\*1971 Gran Coupe Trim Codes - PRX9, PRT7, PRY3



Front Buckets .....	AA70CBL0010(C)
100.....	\$1080/pr. (L3)
200, 656, 664, 666.....	\$1311/pr. (L3)

\*Molded foam is available for this model. See the "Molded Foam" section in this catalog.

Hardtop Rear Bench (all vinyl).....	AA70CBL0040(C)
Convertible Rear Bench (all vinyl) .....	AA70CBL0050(C)
100, 200, 656, 666.....	\$403/ea.
664.....	\$423/ea. (L4)





## 1971 BARRACUDA, 'CUDA & GRAN COUPE "CLOTH STYLE"

This Legendary product features as-original Salt & Pepper cloth inserts with Coachman grain skirts.

### (C) COLOR CODES:

(816) - Black & Charcoal Salt & Pepper Cloth (812) / Black (100) [Trim Codes P5X9, H5X9]  
(817) - Black & Orange Salt & Pepper Cloth (814) / Bright Orange (560) [Trim Code H5XV]

\*\*\*Barracuda, 'Cuda Trim Codes - H5X9, H5XV

\*\*\*Gran Coupe Trim Code - P5X9



Front Buckets ..... AA71CBC0010(C)  
816 ..... \$1089/pr. (L4)  
817 ..... \$1089/pr. (L1)

Hardtop Rear Bench ..... AA71CBC0040(C)  
816 ..... \$866/pr. (L4)  
817 ..... \$866/pr. (L1)

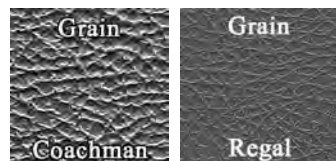
## 1970 CHALLENGER R/T & CHALLENGER

This Legendary product features as-original Coachman or Regal grain inserts with Coachman grain skirts.

### (C) COLOR CODES:

(100) - Black [Trim Code H6X9]  
(200) - White [Trim Code H6XW]  
(338) - Bright Blue [Trim Code H6B5]  
(434) - Green [Trim Code H6F8]  
(540) - Burnt Orange [Trim Code H6K4]  
(550) - Red [Trim Code H6E4]  
(656) - Brown [Trim Code H6T5]

\*Although original dealer albums show Regal grain inserts some 1970 Challengers have been found with identical trim codes, but with Coachman grain inserts.



Front Buckets (Regal inserts) ..... AA70CJS0010(C)  
Front Buckets (Coachman inserts) ..... AA70CJ00010(C)  
100, 200, 338, 434, 540, 656 ..... \$597/pr.  
550 ..... \$627/pr. (L4)

\*Please specify insert grain at time of order.

\*Molded foam is available for this model. See the "Molded Foam" section in this catalog.

Rear Bench Htp (Regal inserts) ..... AA70CJS0048(C)  
Rear Bench Htp (Coachman inserts) ..... AA70CJ00048(C)  
Rear Bench Conv (Regal inserts) ..... AA70CJS0056(C)  
Rear Bench Conv (Coachman inserts) ..... AA70CJ00056(C)  
100, 200, 338, 434, 540, 656 ..... \$403/ea.  
550 ..... \$423/ea. (L4)

\*Please specify insert grain at time of order.

## 1970 BARRACUDA & CHALLENGER "DEPUTY" (WITH 'A93' OPTION CODE)

This Legendary product features as-original Ranger grain inserts with Coachman grain skirts.

### (C) COLOR CODES:

(100) - Black [Trim Code L6X9]  
(200) - White [Trim Code L6XW]



Front Buckets ..... AA70CBJS010(C)  
(All colors) ..... \$597/pr.

\*Molded foam is available for this model. See the "Molded Foam" section in this catalog.

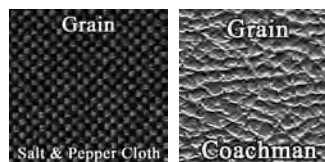
Rear Bench ..... AA70CBJS048(C)  
(All colors) ..... \$403/ea.

## 1970 CHALLENGER R/T, SE & CHALLENGER "CLOTH STYLE"

This Legendary product features as-original Salt & Pepper cloth inserts with Coachman grain skirts.

### (C) COLOR CODES:

(811) - Black & White Salt & Pepper Cloth (810) / Black (100) [Trim Code H5X9]  
(815) - Black & Orange Salt & Pepper Cloth (814) / Burnt Orange (540) [Trim Code H5K4]  
(819) - Black & Blue Salt & Pepper Cloth (818) / Bright Blue (338) [Trim Code H5B5]  
(823) - Black & Green Salt & Pepper Cloth (820) / Green (434) [Trim Code H5F8]



Front Buckets ..... AA70CJC0010(C)  
811 ..... \$919/pr. (L4)  
815, 819, 823 ..... \$925/pr. (L1)

\*Molded foam is available for this model.

See the "Molded Foam" section in this catalog.

Hardtop Rear Bench ..... AA70CJC0040(C)  
811 ..... \$679/pr. (L4)  
815, 819, 823 ..... \$681/pr. (L1)



# Dodge & Plymouth E-Body

## 1970 CHALLENGER R/T, SE & CHALLENGER "LEATHER STYLE"

This Legendary product features as-original Leather inserts with Coachman grain skirts.

### (C) COLOR CODES:

- (100) - Black [Trim Code HRX9]  
(540) - Burnt Orange [Trim Code HRK4]  
(656) - Brown [Trim Code HRT5]



Front Buckets ..... AA70CJL0010(C)

100..... \$1157/pr. (L3)

540, 656 ..... \$1498/pr. (L3)

\*Molded foam is available for this model. See the "Molded Foam" section in this catalog.

Hardtop Rear Bench (all vinyl)..... AA70CJL0040(C)

Convertible Rear Bench (all vinyl)..... AA70CJL0050(C)

(All colors)..... \$403/ea.

\*540 Burnt Orange was not available in a convertible model.

## 1971 CHALLENGER R/T & CHALLENGER "LEATHER STYLE"

This Legendary product features as-original Leather inserts with Coachman grain skirts.

### (C) COLOR CODES:

- (100) - Black [Trim Code HRX9]



Front Buckets ..... AA70CBL0010(C)

100..... \$1080/pr. (L3)

\*Molded foam is available for this model. See the "Molded Foam" section in this catalog.

Hardtop Rear Bench (all vinyl)..... AA70CBL0040(C)

Convertible Rear Bench (all vinyl)..... AA70CBL0050(C)

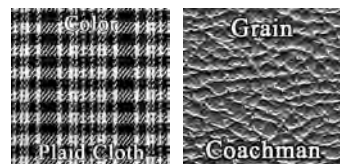
100..... \$403/ea.

## 1971 CHALLENGER R/T & CHALLENGER "CLOTH STYLE"

This Legendary product features as-original Plaid cloth inserts with Coachman grain skirts.

### (C) COLOR CODES:

- (831) - Black & White Plaid Cloth (830) / Black (100) [Trim Code H5XX]  
(833) - Yellow & Green Plaid Cloth (832) / Green (434) [Trim Code H5F7]  
(835) - Black & Orange Plaid Cloth (834) / Black (100) [Trim Code H5X9]



Front Buckets ..... AA71CJC0010(C)

831..... \$980/pr. (L4)

833, 835..... \$1015/pr. (L1)

\*Molded foam is available for this model.

See the "Molded Foam" section in this catalog.

Hardtop Rear Bench..... AA71CJC0040(C)

831..... \$658/pr. (L4)

833, 835..... \$681/pr. (L1)

## 1971 BARRACUDA, 'CUDA & CHALLENGER "STANDARD STYLE"

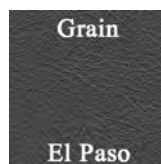
This Legendary product features as-original El Paso grain inserts with Coachman grain skirts.

### (C) COLOR CODES:

- (100) - Black [Trim Codes H6X9, L6X9]  
(200) - White [Trim Codes H6XW, L6XW]  
(340) - Bright Blue [Trim Codes H6B5, L6B5]  
(452) - Green [Trim Codes H6F7, L6F7]  
(560) - Orange [Trim Code H6XV]  
(665) - Tan (668) / Brown (664) [Trim Codes H6T7, L6T7]

\*\*\*Barracuda, 'Cuda Trim Codes - H6X9, H6XW, H6B5, H6F7, H6XV, H6T7

\*\*\*Challenger Trim Codes - L6X9, L6XW, L6B5, L6F7, L6T7



Front Buckets (without well)..... AA71CBJS010(C)

Front Buckets (with well)..... AA71CBJSW10(C)

100, 200, 340, 452, 560..... \$557/pr.

665..... \$585/pr. (L4)

\*Please specify with or without small cordwell around surrounding insert.

Hardtop Rear Bench..... AA71CBJS048(C)

Convertible Rear Bench ..... AA71CBJS056(C)

100, 200, 340, 452, 560..... \$403/ea.

665..... \$423/ea. (L4)



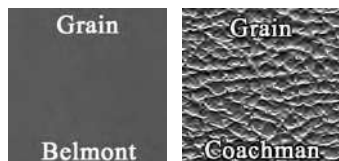


## 1971 CHALLENGER R/T & CHALLENGER "STANDARD STYLE"

This Legendary product features as-original Belmont grain inserts with Coachman grain skirts.

### (C) COLOR CODES:

- (100) - Black [Trim Code H6X9]
- (200) - White [Trim Code H6XW]
- (340) - Bright Blue [Trim Code H6B5]
- (452) - Green [Trim Code H6F7]
- (664) - Brown [Trim Code H6T7]
- (666) - Ember Gold [Trim Code H6Y3]



Front Buckets .....	AA71CJBD010(C)
100, 200, 340, 452, 666.....	\$597/pr.
664.....	\$627/pr. (L4)

\*Molded foam is available for this model. See the "Molded Foam" section in this catalog.

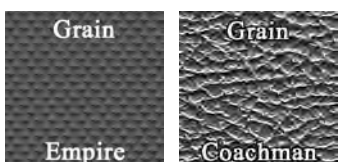
Hardtop Rear Bench.....	AA71CJBD048(C)
Convertible Rear Bench.....	AA71CJBD056(C)
100, 200, 340, 452, 666.....	\$403/ea.
664.....	\$423/ea. (L4)

## 1973 BARRACUDA, 'CUDA & CHALLENGER

This Legendary product features as-original Empire grain inserts with Coachman grain skirts.

### (C) COLOR CODES:

- (100) - Black [Trim Code A6X9]
- (200) - White [Trim Code A6XW]
- (355) - Dark Blue (342) / Bright Blue (340) [Trim Code A6B5]
- (447) - Light Green (446) / Dark Green (444) [Trim Code A6F6]



Front Buckets .....	AA73CJBJ0010(C)
(All colors).....	\$597/pr.

\*Molded foam is available for this model. See the "Molded Foam" section in this catalog.

Hardtop Rear Bench.....	AA73CJBJ0040(C)
(All colors).....	\$403/ea.

## 1972 BARRACUDA, 'CUDA & CHALLENGER

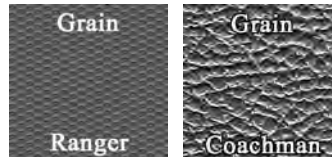
This Legendary product features as-original Ranger grain inserts with Coachman grain skirts.

### (C) COLOR CODES:

- (100) - Black [Trim Codes A6X9, B6X9]
- (200) - White [Trim Codes A6XW, B6XW]
- (340) - Bright Blue [Trim Codes A6B5, B6B5]
- (444) - Green [Trim Codes A6F6, B6F6]
- (666) - Ember Gold [Trim Codes A6Y3, B6Y3]

\*\*\*Barracuda, 'CUDA Trim Codes - A6X9, A6XW, A6B5, A6F6, A6Y3

\*\*\*Challenger Trim Codes - B6X9, B6XW, B6B5, B6F6, B6Y3



Front Buckets .....	AA72CJBJ0010(C)
(All colors).....	\$597/pr.

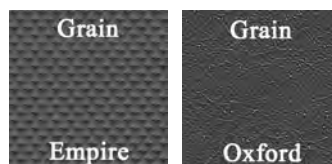
Hardtop Rear Bench.....	AA72CJBJ0040(C)
(All colors).....	\$403/ea.

## 1974 BARRACUDA, 'CUDA & CHALLENGER

This Legendary product features as-original Empire grain inserts with Oxford grain skirts.

### (C) COLOR CODES:

- (100) - Black [Trim Code A6X9]
- (200) - White [Trim Code A6XW]
- (360) - Lagoon Blue [Trim Code A6B6]
- (450) - Jade Green [Trim Code A6G6]



Front Buckets .....	AA74CJBJ0010(C)
100, 200.....	\$597/pr.

360, 450.....\$627/pr. (L4)

\*Molded foam is available for this model. See the "Molded Foam" section in this catalog.

Hardtop Rear Bench.....	AA74CJBJ0040(C)
100, 200.....	\$403/ea.
360, 450.....	\$423/ea. (L4)



# Dodge & Plymouth E-Body

## 1970 BARRACUDA & 'CUDA

This Legendary product features as-original  
Ranger grain inserts with Coachman grain skirts.

### (C) COLOR CODES:

(100) - Black [Trim Code H4X9]

(200) - White [Trim Codes H4XW, H4BW, H6FW]

\*H4XW - White w/ Black Carpet

\*H4BW - White w/ Blue Carpet

\*H4FW - White w/ Green Carpet

(338) - Bright Blue [Trim Code H4B5]

(434) - Green [Trim Code H4F8]



Front Split Bench with Center Armrest ..... **AA70CB00030(C)**

(All colors)..... \$656/pr.

\*Molded foam is available for this model. See the "Molded Foam" section in this catalog.

Hardtop Rear Bench..... **AA70CB00048(C)**

(All colors)..... \$403/ea.

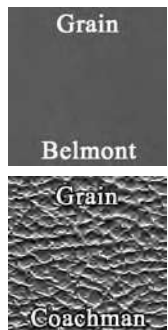
## 1971 CHALLENGER

This Legendary product features as-original  
Belmont grain inserts with Coachman grain skirts.

### (C) COLOR CODES:

(100) - Black [Trim Code H4X9]

(452) - Green [Trim Code H4F7]



Front Split Bench with Center Armrest ..... **AA71CBJD030(C)**

(All colors)..... \$656/pr.

\*Molded foam is available for this model. See the "Molded Foam" section in this catalog.

Hardtop Rear Bench..... **AA71CBJD048(C)**

(All colors)..... \$403/ea.

## 1970 CHALLENGER

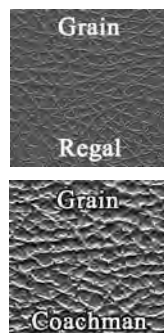
This Legendary product features as-original Coachman or  
Regal grain inserts with Coachman grain skirts.

### (C) COLOR CODES:

(100) - Black [Trim Code H4X9]

(338) - Bright Blue [Trim Code H4B5]

\*Although original dealer albums show Regal grain inserts  
some 1970 Challengers have been found with identical trim  
codes, but with Coachman grain inserts.



Front Split Bench with Center Armrest (Regal) ..... **AA70CJS0030(C)**

Front Split Bench with Center Armrest (Coachman)..... **AA70CJ00030(C)**

(All colors)..... \$656/pr.

\*Molded foam is available for this model. See the "Molded Foam" section in this catalog.

Hardtop Rear Bench (Regal) ..... **AA70CJS0048(C)**

Hardtop Rear Bench (Coachman)..... **AA70CJ00048(C)**

(All colors)..... \$403/ea.

## 1971 BARRACUDA & 'CUDA

This Legendary product features as-original  
El Paso grain inserts with Coachman grain skirts.

### (C) COLOR CODES:

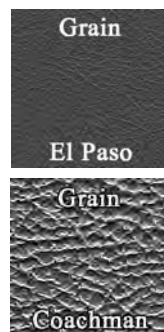
(100) - Black [Trim Code H4X9]

(200) - White [Trim Code H4XW]

(340) - Bright Blue [Trim Code H4B5]

(452) - Green [Trim Code H4F7]

(665) - Tan (668) / Brown (664) [Trim Code H4T7]



Front Split Bench with Center Armrest (without welt) ..... **AA71CBJS030(C)**

Front Split Bench with Center Armrest (with welt) ..... **AA71CBJSW30(C)**

100, 200, 340, 452..... \$614/pr.

665..... \$645/pr. (L4)

\*Please specify with or without small cordwelt around surrounding insert.

Hardtop Rear Bench..... **AA71CBJS048(C)**

100, 200, 340, 452..... \$403/ea.

665..... \$423/ea. (L4)

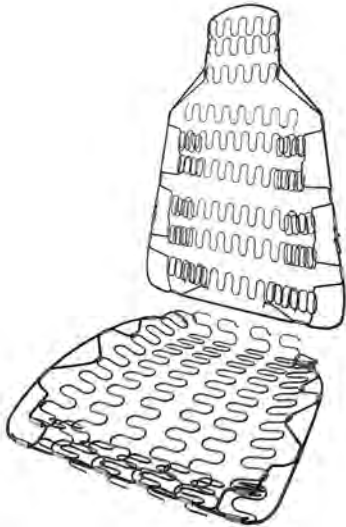




## SEAT SPRING KITS

### 1970-71 A, B & E-BODY Bucket Seat Top & Bottom Spring Kit

Each kit consists of (1) seat top spring assembly and (1) seat bottom spring assembly.



**SA70CABE** ..... \$259.00/kit  
 ☞ (1) Kit does (1) complete bucket seat  
 ☞ (2) Kits must be ordered to do a pair of bucket seats  
 ☞ Sold as a top and bottom kit only

### 1973-76 A-BODY & 1973-74 E-BODY

#### Bucket Seat Bottom Spring Kit

Each kit consists of (4) individual seat bottom springs.



**SA73CAE** ..... \$59.00/kit  
 ☞ (1) Kit does (1) bucket seat bottom  
 ☞ (2) Kits must be ordered to do a pair of bucket seat bottoms

### 3 3/8" INTERLOCKING SPRING

#### Long Bench Seat & Rear Seat

3 3/8" long spring used in automotive interiors to tie together the coil seat springs which absorb shock and give added resilience to the seat. Used in all makes and models dating back to the 1930's



**SASPRING** ..... \$2.00/ea.  
 ☞ Applications Include: Front Split Bench Seats, Front Straight Bench Seats, Hardtop Rear Seats, Sedan/Coupe Rear Seats & Convertible Rear Seats

### UNIVERSAL COIL SPRINGS Bench Seat & Rear Seat

Universal coil seat springs used in automotive interiors to absorb shock and give added resilience to the seat. Used in all makes and models dating back to the 1930's.

**NOTE: When choosing an upholstery coil seat spring, measure the overall height when not under pressure.**



**SACOIL4** (4" Tall - 13 Gauge) ..... \$7.00/ea.  
**SACOIL4.5** (4.5" Tall - 13 Gauge) .... \$7.00/ea.  
**SACOIL5** (5" Tall - 12 Gauge) ..... \$7.00/ea.  
**SACOIL5.5** (5.5" Tall - 12 Gauge) .... \$7.00/ea.

☞ Applications Include: Front Split Bench Seats, Front Straight Bench Seats, Hardtop Rear Seats, Sedan/Coupe Rear Seats & Convertible Rear Seats

## Seat Upholstery Installation Kits Are Available To Help Complete Your Install!!

Seat upholstery Installation Kits from Legendary give you the products you need to do the job yourself!! All components are upholstery grade and have been hand selected by our team of installation experts to provide the highest quality materials available.

**Check Out the Installation Kits  
Section For More Information**

**\*Right After Seat Upholstery Section**





# Dodge & Plymouth E-Body

## PLASTIC SEATBACK COVERS



Reproduction plastic seat back covers for 1970-72 A & E-Body and 1970-74 B-Body models.

**1970 A, B, & E-Body (OEM - Injection Molded)**  
**SK70ABE0M18100** (Black)..... \$299.00/pr.  
**SK70ABE0M18200** (White)..... \$299.00/pr.

**1971-72 A & E-Body,**  
**1971-74 B-Body (OEM - Injection Molded)**  
**SK71ABE0M18100** (OEM) (Black)..... \$299.00/pr.  
**SK71ABE0M18200** (OEM) (White)..... \$299.00/pr.

## BUCKET SEAT CATCH



Bucket seat catch for 1970-74 A, B & E-Body models locks the front seat top in place and keeps it from falling forward.

**TA70ABE-SEATCTCH**..... \$39.00/pr.

## SEAT STOPS



Nylon bumpers for B & E-Body models keep the front seat top in its correct upright position. These mount on the backside of the front seat bottoms.

**1970-72 B & E-Body (Bucket)**  
**TA70ABE-SEATSTOP**..... \$29.00/pr.  
 \*STUDS INCLUDED

## HINGE COVERS



1973-74 E-Body & 1973-76 A-Body reproduction hinge covers for bucket seat models. Screws included.

**HG73CBJLV01** (Black)..... \$59.00/pr.  
**HG73CBJLV02** (White)..... \$59.00/pr.

## BUCKET SEAT HINGE WASHER



Black panel board washers help protect the skirts on your upholstery from wear. These washers come in a set of (4) and work for all 1966-74 A, B, C & E-Body bucket seats.

**TAHINGEWASHER** (Set/4)..... \$ 3.00/set

## CENTER ARMREST HINGE WASHER

Side hinge washers made of die-cut polypropylene for bucket seat models with optional center armrest. These washers protect the vinyl from wear when the armrest is folded in the up or down position.

**HG66WASHER**..... \$ 4.00/pr.

## SEAT BELT GUIDE



Reproduction seat belt guides for 1970 Barracuda & Challenger models. Includes installation hardware.

**TN70E-SBGUIDE01**..... \$19.00/pr.

## FRONT SHOULDER HARNESS MOUNTING COVER





Reproduction front shoulder harness mounting covers for 1967-70 A & B-Body and 1970-74 E-Body models.




**TN67ABESHOULDER**..... \$49.00/pr.





# MOLDED FOAM AND FOAM ACCESORIES

 [facebook.com/legendaryautointeriors](https://facebook.com/legendaryautointeriors)  
 [twitter.com/legendaryautoin](https://twitter.com/legendaryautoin)


 [www.legendaryautointeriors.com](https://www.legendaryautointeriors.com)  
 [instagram.com/legendaryautointeriorsltd](https://instagram.com/legendaryautointeriorsltd)  
 [youtube.com/user/legendaryauto](https://youtube.com/user/legendaryauto)



## INSTALLATION KITS

### FRONT BUCKET SEATS All 1960-79 Dodge/Chrysler/Plymouth



**INSTALLATION-KIT1**  .....\$29.00/ea.  
 Kit includes: 3 yards of burlap, 30 feet of paper coated listing wire, 2.5 yards of 2 inch wide felt & a dust mask.

### HARDTOP AND CONVERTIBLE REAR SEATS All 1966-74 Dodge/Chrysler/Plymouth



**INSTALLATION-KIT2**  .....\$279.00/ea.  
 Kit includes: (1) 30"x70" 1 1/2" thick foam, (1) 10lb. roll of cotton, 4 yards of burlap, 12 feet of paper coated listing wire, 2 yards of muslin, (1) 3 1/2" x 64" Wire Edge Reinforced Burlap Cotton Support Band & a dust mask.


### SPLIT BENCH & FULL BENCH FRONT SEATS All 1962-74 Dodge/Chrysler/Plymouth \*With & Without Center Armrest




**INSTALLATION-KIT4**  .....\$279.00/ea.  
 Kit includes: (1) 30"x70" 1 1/2" thick foam, (1) 10lb. roll of cotton, 4 yards of burlap, 12 feet of paper coated listing wire, 2 yards of muslin, 3 yards of 2 inch wide felt, (1) 3 1/2" x 64" Wire Edge Reinforced Burlap Cotton Support Band & a dust mask.

## HOG RING PLIER KITS

Standard Hog Ring Plier Kit

**TAHOG** .....\$15.00/ea.  
 Kit contains pliers and enough hog rings for a front or rear installation only.


Deluxe Hog Ring Plier Kit



**TAHOGHVV** .....\$39.00/ea.  
 Kit contains heavy duty pliers and enough hog rings for a complete front and rear installation.

Hog Rings (Pkg/200)

**TAHOGRING200** .....\$ 5.00/pk.

## INSTALLATION, FOAM & COTTON ACCESSORIES

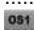
Cotton Batting (1 Roll) 

**TACOTTONROLL** .....\$ 48.00ea.  
 1 Roll consists of 10 lbs.  
 Must be used in conjunction with Legendary muslin.

Muslin (1 yard)

**TAYDMUSLIN** .....\$ 3.00/yd.  
 Must be used in conjunction with Legendary cotton batting.

High Density Foam

**TAFOAM1** (1.5" thick x 12" x 12") .....\$20.00/ea.  
**TAFOAM2** (1.5" thick x 24" x 24") .....\$38.00/ea.  
**TAFOAM3** (1.5" thick x 30" x 70")  .....\$82.00/ea.

Burlap (36" wide)

**TABURLAP** .....\$ 3.00/yd.

Paper Coated Wire

**TAPAPERWIRE** .....\$ 2.50/ft.





## 1970-71 E-BODY BUCKET SEAT FOAM



1970-71 molded foam for the following **E-Body models** with high-back bucket seats. Sets consist of a pair of (2) front seat tops, (2) front seat bottoms and (2) headrest caps.

**1970 Challenger (cloth style)**  
**1970 Challenger (leather style)**  
**1971 Challenger ("deluxe" vinyl style)**

**MF70CJDLSET**  .....\$369.00/set  
 Requires minimal to moderate modification on some models during installation.  
 Professional installation is highly recommended. Please see our installation services page located in the back of this catalog.

## 1970-71 A, B & E-BODY BUCKET SEAT FOAM



1970-71 molded foam for the following **A, B, & E-Body models** with high-back bucket seats. Sets consist of a pair of (2) front seat tops, (2) front seat bottoms and (2) headrest caps.

1970 'Cuda, Roadrunner, Sport Satellite, GTX & Superbird (vinyl style)  
 1970 Barracuda Gran Coupe (vinyl & cloth style)  
 1970-71 Duster (vinyl style)  
 1971 Demon  
 1971 Challenger (cloth style)

**MF70ABESET**  .....\$369.00/set  
 Requires minimal to moderate modification on some models during installation.  
 Professional installation is highly recommended. Please see our installation services page located in the back of this catalog.

## 1970-71 A & E-BODY BUCKET SEAT FOAM



1970-71 molded foam for the following **A & E-Body models** with high-back bucket seats. Sets consist of a pair of (2) front seat tops, (2) front seat bottoms and (2) headrest caps.

1970-71 'Cuda, Barracuda Gran Coupe (leather style)  
 1971 Challenger (leather style)  
 1971 Scamp (vinyl style)  
 1970 Challenger (vinyl style)  
 1971 Dart Swinger (vinyl style)


**MF70CBLJSET**  .....\$369.00/set  
 Requires minimal to moderate modification on some models during installation.  
 Professional installation is highly recommended. Please see our installation services page located in the back of this catalog.

## 1973-74 E-BODY BUCKET SEAT FOAM



1973-74 molded foam for the following **E-Body models** with high-back bucket seats. Sets consist of a pair of (2) front seat tops, (2) front seat bottoms

**1973-74 Challenger & Cuda**

**MF73CBJSET**  .....\$369.00/set  
 Requires minimal to moderate modification on some models during installation.  
 Professional installation is highly recommended. Please see our installation services page located in the back of this catalog



## Dodge & Plymouth E-Body

### 1970 CUDA SPLIT BENCH W/ CENTER ARM REST



#### INSTALLATION-KIT13 .....\$337.00/set

 Kit includes: 1 pair of molded foam front seat tops with caps, (1) 30"x70" 1 1/2" thick foam, 4 yards of burlap, 7 yards paper coated listing wire, 2 yards of muslin, 3 yards of 2" wide felt & a dust mask.

### 1970 CHALLENGER SPLIT BENCH W/ CENTER ARM REST



#### INSTALLATION-KIT14 .....\$337.00/set

 Kit includes: 1 pair of molded foam front seat tops with caps, (1) 30"x70" 1 1/2" thick foam, 4 yards of burlap, 7 yards paper coated listing wire, 2 yards of muslin, 3 yards of 2" wide felt & a dust mask.

### 1971 CHALLENGER SPLIT BENCH W/ CENTER ARM REST



#### INSTALLATION-KIT15 .....\$337.00/set



 Kit includes: 1 pair of molded foam front seat tops with caps, (1) 30"x70" 1 1/2" thick foam, 4 yards of burlap, 7 yards paper coated listing wire, 2 yards of muslin, 3 yards of 2" wide felt & a dust mask.










# DOOR PANEL AND TRIM ACCESORIES

 [facebook.com/legendaryautointeriors](https://facebook.com/legendaryautointeriors)  
 [twitter.com/legendaryautoin](https://twitter.com/legendaryautoin)


 [www.legendaryautointeriors.com](http://www.legendaryautointeriors.com)  
 [instagram.com/legendaryautointeriorsltd](https://instagram.com/legendaryautointeriorsltd)  
 [youtube.com/user/legendaryauto](https://youtube.com/user/legendaryauto)




1970-74 BARRACUDA,  
'CUDA & GRAN COUPE  
BUCKET & BENCH STYLE



- (C) COLOR CODES:
- (100) Black (70-74)
  - (200) White (70-74)
  - (338) Bright Blue (70)
  - (550) Red (70)


"OEM" Front Panels (Injection Molded As-Original)	
.....	DO70CB0MM12(C)N 
(100, 200) .....	\$799/pr.
(338, 550) .....	\$666/pr.
<small>For manuals cars. Panels have side markings on the backside indicating where to cut for power window option. This must be done by customer.</small>	


"OEM" Rear Panels (Injection Molded As-Original)	
Htp.....	DO70CB0MM48(C) 
Conv. ....	Currently N/A
(100, 200) .....	\$699/pr.
(338, 550) .....	\$666/pr.

1970-74 CHALLENGER,  
CHALLENGER R/T & T/A  
BUCKET & BENCH STYLE



- (C) COLOR CODES:
- (100) Black (70-74)
  - (200) White (70-74)
  - (338) Bright Blue (70)
  - (550) Red (70)

"OEM" Front Panels (Injection Molded As-Original)	
.....	DO70CJ0MM12(C)N 
(100, 200) .....	\$679/pr.
(338, 550) .....	\$666/pr.
<small>For manuals cars. Panels have side markings on the backside indicating where to cut for power window option. This must be done by customer.</small>	

"OEM" Rear Panels (Injection Molded As-Original)	
Htp.....	DO70CJ0MM48(C) 
Conv. ....	Currently N/A
(100, 200) .....	\$639/pr.
(338, 550) .....	\$666/pr.





## ARMREST PADS



1970-74 Barracuda reproduction front armrest pads.

- AP70CB100F2 (Black)** ..... \$119.00/pr.
  - AP70CB200F2 (White)** ..... \$119.00/pr.
  - AP70CB340F2 (Bright Blue '71-'73)** ..... \$119.00/pr.
  - AP70CB550F2 (Red)** ..... \$119.00/pr.
- ☞ All colored armrest pads are matched to the standard or deluxe door panels



1970-74 Challenger reproduction front armrest pads.

- AP70CJ100F2 (Black)** ..... \$119.00/pr.
  - AP70CJ200F2 (White)** ..... \$119.00/pr.
- ☞ All colored armrest pads are matched to the standard or deluxe door panels

## ASH TRAYS

Reproduction ash trays and bezels for 1970 E-Body rear interior panels and 1971-74 E-Body consoles.

- 1970 E-Body (rear interior panels only)**
- AT66BE** ..... \$63.00/ea.
- 1971-74 E-Body (console only)**
- AT66BE** ..... \$63.00/ea.

## DOOR HANDLES



1970-74 Cuda inside door handles.

- CK70CB-DOOR** ..... \$59.00/pr.



1970-74 Challenger inside door handles.

- CK70CJ-DOOR** ..... \$49.00/pr.

## DOOR PANEL WOODGRAIN



1970-74 Challenger door panel woodgrain.

- DO70CJ-WOODGRAIN** ..... \$21.00/pr.
- ☞ Customer must reuse original center emblems.



1970 Dodge Challenger SE

## DOOR PANEL CARPET TRIM

1970 Challenger SE door panel carpet trim. This carpet trim piece features a new board with vinyl edge binding color-matched to your interior.

- DO70CJ(XX)**
- (All colors)** ..... \$148.00/pr.
- ☞ Please refer to carpet color selection page to specify carpet color at time of order.
- ☞ For correct vinyl color please refer to the year's color codes listed in this catalog.

## WINDOW CRANKS



Reproduction front and rear window cranks for all 1967-74 A & E-Body models. Chrome plated with black knob.

- 1968-74 A-Body (all models)**
- 1970-74 (Barracuda & Challenger)**
- CK68C-WNDW** ..... \$59.00/pr.
- ☞ Correct for front and rear windows.
- ☞ Screws and washers not included.

- 1970-74 Challenger**
- CK70C-WNDW2 (Rear windows)** ..... \$69.00/pr.
- ☞ Screws and 1/4" thick washers included in this kit.

- 1970-74 Barracuda**
- CK70C-WNDW3 (Rear windows)** ..... \$69.00/pr.
- ☞ Screws and 1/2" thick textured washers included in kit.

## WINDOW CRANK SPACERS



Front and rear window crank spacers for all 1968-74 A & E-Body models

- 1968-74 A & E-Body (all models)**
- CK68SPACER** ..... \$5.00/ea.
- ☞ Will work for front and rear windows on A-Body models.
- ☞ Will only work for front windows on E-Body models.

- 1970-74 E-Body (Challenger)**
- CK70SPACER2 (Rear windows)** ..... \$5.00/ea.
- ☞ 1/4" thick washer.

- 1970-74 E-Body (Barracuda)**
- CK70SPACER3 (Rear windows)** ..... \$10.00/ea.
- ☞ 1/2" thick textured washer.

## WINDOW CRANK SCREWS



Chrome plated window crank screws with hex like head for all 1968-74 A & E-Body models.

- CK68SCREW** ..... \$2.00/ea.
- ☞ Use (4) per car.

## VENT WINDOW CRANKS

**1967 A & E-Body (all models)**

- CK67ABC-VENT** ..... \$29.00/ea.



\*\*\*

Providing the automotive industry  
with the world's highest quality  
soft trim products and services  
RIGHT HERE AT HOME

\*\*\*

STILL ASSEMBLED AND  
MADE IN THE ★★★★★  
**USA** 

\*\*\*

THERE REALLY IS A DIFFERENCE!!

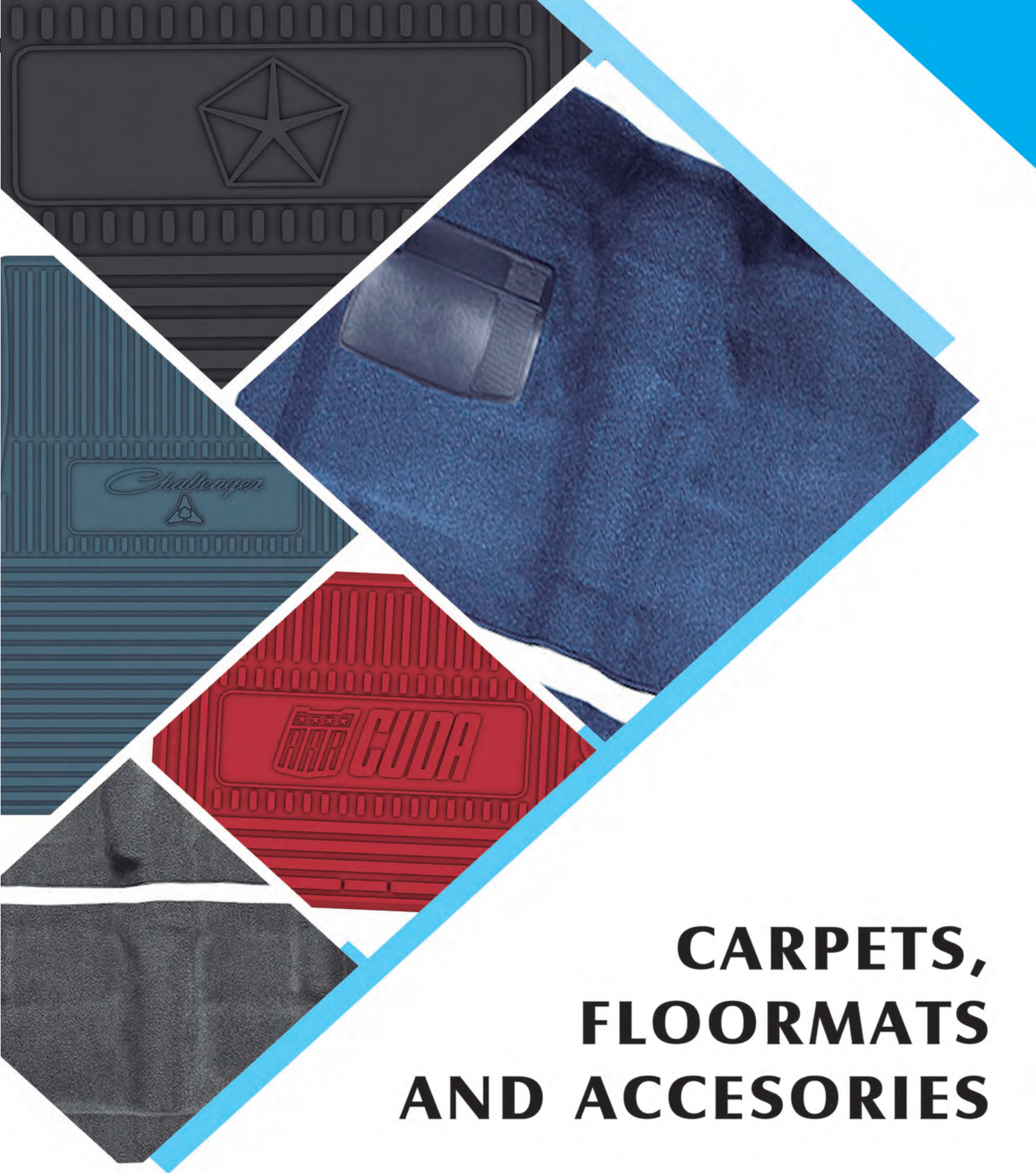
\*\*\*

*Legendary*  
**AUTO INTERIORS LTD.®**



[www.legendaryautointeriors.com](http://www.legendaryautointeriors.com)










# CARPETS, FLOORMATS AND ACCESORIES

 [facebook.com/legendaryautointeriors](https://facebook.com/legendaryautointeriors)  
 [twitter.com/legendaryautoin](https://twitter.com/legendaryautoin)

 [www.legendaryautointeriors.com](https://www.legendaryautointeriors.com)  
 [instagram.com/legendaryautointeriorsltd](https://instagram.com/legendaryautointeriorsltd)  
 [youtube.com/user/legendaryauto](https://youtube.com/user/legendaryauto)





# MODEL SPECIFIC CARPET

Legendary brand molded carpets utilize the heaviest face weight cutpile and loop carpet combined with an extra heavy poly coated backing that provides for an accurate and sharply detailed mold formed area. Surged edges and accurately die cut and applied 40oz. felt underlayment is the finishing touch to our vehicle specific carpets.

## **Bound and Surged Edges**

Both Legendary cutpile and loop molded carpets have a heavy duty bound and surged edge that provides for an easy installation and clean appearance.



## **Underlayment Padding**

Legendary molded carpets are made with a 40 oz. felt underlayment padding. All padding is trimmed around seat track mounts, seat belt holes and covers the most area than any carpet in the industry!





# 80/20 Loop CARPET COLOR SELECTOR (c)

<b>01</b> BLACK	<b>03</b> RED	<b>04</b> AQUA	<b>05</b> DARK TEAL	<b>06</b> FORD BLUE	<b>07</b> DARK BLUE	<b>08</b> TEAL	<b>09</b> SHADE 13 BLUE
<b>10</b> BRIGHT BLUE	<b>11</b> MEDIUM BLUE	<b>12</b> GREEN	<b>13</b> DARK GREEN	<b>14</b> DARK OLIVE GREEN	<b>15</b> BLUE GREEN	<b>16</b> MOSS GREEN	<b>21</b> MEDIUM RED
<b>22</b> BURNT ORANGE	<b>24</b> ROSE BEIGE	<b>25</b> DARK BROWN	<b>26</b> SADDLE	<b>27</b> LT/MEDIUM SADDLE	<b>28</b> DARK COPPER	<b>29</b> DARK SADDLE	<b>31</b> MAROON
<b>32</b> GOLD	<b>33</b> DARK GOLD	<b>34</b> FAWN	<b>35</b> RED TUXEDO	<b>36</b> BLUE TUXEDO	<b>37</b> AQUA TUXEDO	<b>38</b> LIGHT GREEN	<b>39</b> ORANGE
<b>40</b> PLUM	<b>41</b> SUNSET GLOW	<b>42</b> SILVER MINK	<b>44</b> CORAL	<b>45</b> EMBER GLOW	<b>46</b> IVY GOLD	<b>47</b> FAWN TUXEDO	<b>48</b> SILVER
<b>49</b> GUNMETAL GRAY	<b>50</b> PARCHMENT	<b>51</b> MIDNIGHT BLUE	<b>53</b> GOLD TUXEDO	<b>54</b> COPPER TUXEDO	<b>55</b> OLIVE TUXEDO	<b>81</b> CHARCOAL	

**\*\*36oz. JUTE PADDING INCLUDED WHERE PADDING WAS ORIGINAL.**

**\*\*VINYL BOUND EDGE WHERE THE FRONT AND REAR SECTIONS OF THE CARPET OVERLAP.**

**\*\*COLOR MATCHED ORIGINAL HEEL PAD ACCURATELY APPLIED USING THE SAME METHOD AS OEM.**

**\*\*MEETS OR EXCEEDS OEM SPECIFICATIONS.**

**\*\*DIMMER SWITCH GROMMET INCLUDED.**

**\*\*COLOR SAMPLES ARE AVAILABLE FOR COLORS OTHER THAN BLACK.**

**\*\*DYE LOTS WILL VARY +/- 10%. THIS IS COMMON IN THE CARPET INDUSTRY. CUSTOMERS ARE ENCOURAGED TO ORDER ALL CARPETED PRODUCTS AT THE SAME TIME TO ENSURE MATCHING DYE LOT.**

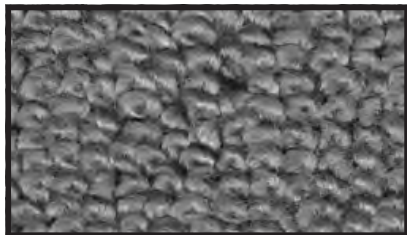
**\*\*FOR YEARS AND MODELS NOT LISTED PLEASE CALL OUR SALES DEPARTMENT AT 800-363-8804**



# Dodge & Plymouth E-Body

## CARPET (NYLON LOOP)

The finest available today. Two-piece pre-molded shape made with an original specification blend of 100% Nylon. All carpets include 36oz. jute padding on the backside, dimmer switch grommet, color matched original style heel pad and vinyl bound edge where the front and rear sections overlap. Carpet kits are not shipped with pre-cut holes and must be done during installation of carpet. Some other minor trimming may be needed.



Loop Style

### E-BODY MODELS

#### 1970 Barracuda

CA70CBA(C) (Automatic).....\$205.00/ea.  
CA70CBS(C) (Manual).....\$205.00/ea.

#### 1971-74 Barracuda

CA71CBA(C) (Automatic).....\$205.00/ea.  
CA71CBS(C) (Manual).....\$205.00/ea.

#### 1970 Challenger

CA70CJA(C) (Automatic).....\$205.00/ea.  
CA70CJS(C) (Manual).....\$205.00/ea.

#### 1971-74 Challenger


CA71CJA(C) (Automatic).....\$205.00/ea.  
CA71CJS(C) (Manual).....\$205.00/ea.

## CARPET YARDAGE

#### Loop Carpet

CAYD(C) (1 yard).....\$79.00/yd.  
 For colors other than black please refer to color code list

#### Loop "Tuxedo" Carpet

CAYD(C) (1 yard).....\$129.00/yd.  
 For colors other than black please refer to color code list

#### Cut-pile Carpet

CAYD(C)P (1 yard).....\$79.00/yd.

## JUTE BACKING

This insulating material when placed between the floorpan and molded carpet enhances sound barrier protection from road noise and adds cushion to your carpet. Also helpful for insulating headliners, trunk areas and more. 36"x36" cut.

TA20OZFELT (20 oz.).....\$19.00/yd.  
TA40OZFELT (40 oz.).....\$29.00/yd.

## SOUND DEADENER

This rubber/tar material installs under the carpet to reduce heat and noise. Pre-cut to correct shape and size.

#### 1967-76 A-Body (all models)

1970-74 E-Body (all models)  
SD66CABE.....\$99.00/ea.

## 80/20 LOOP CARPET COLORS (C)

(01) Black	(32) Gold
(03) Red	(33) Dark Gold
(04) Aqua	(34) Fawn
(05) Teal	(36) Blue Tuxedo
(06) Ford Blue	(37) Aqua Tuxedo
(07) Dark Blue	(38) Light Green
(08) Teal	(39) Orange
(09) Shade 13 Blue	(40) Plum
(10) Bright Blue	(41) Sunset Glow
(11) Medium Blue	(42) Silver Mink
(12) Green	(44) Coral
(13) Dark Green	(45) Ember Glow
(14) Dark Olive Green	(46) Ivy Gold
(15) Blue Green	(47) Fawn Tuxedo
(16) Moss Green	(48) Silver
(21) Medium Red	(49) Gunmetal Grey
(22) Burnt Orange	(50) Parchment
(24) Rose Beige	(51) Midnight Blue
(25) Dark Brown	(53) Gold Tuxedo
(26) Saddle	(54) Copper Tuxedo
(27) Lt/Med Saddle	(55) Olive Tuxedo
(28) Dark Copper	(81) Charcoal
(29) Dark Saddle	
(31) Maroon	

\*For colors other than BLACK, a clean, non-faded sample may be helpful to assure a correct color match when ordering. Samples are available upon request. Dye lots will vary +/- 10%. This is common to industry standards and must be understood by the customer on all colors with or without sample approval. Customers are encouraged to order all carpeted products at one time to ensure the best dye lot matching.

## KICK PANELS

Reproduction plastic kick panels for 1970-74 E-Body models. Available in black or colors in deluxe "OEM" and standard.



#### 1970-74 E-Body (all models) (shown)

KI70CBJ100 (Black).....\$159.00/pr.  
KI70CBJ200 (White).....\$159.00/pr.  
KI70CBJ338 (Bright Blue).....\$159.00/pr.  
KI70CBJ340 (Bright Blue).....\$159.00/pr.  
KI70CBJ360 (Lagoon Blue).....\$159.00/pr.  
KI70CBJ434 (Dark Metallic Green).....\$159.00/pr.  
KI70CBJ444 (Dark Green).....\$159.00/pr.  
KI70CBJ450 (Jade Green).....\$159.00/pr.  
KI70CBJ452 (Dark Metallic Green).....\$159.00/pr.  
KI70CBJ540 (Burnt Orange).....\$159.00/pr.  
KI70CBJ550 (Red).....\$159.00/pr.  
KI70CBJ656 (Brown).....\$159.00/pr.  
KI70CBJ664 (Brown).....\$159.00/pr.  
KI70CBJ666 (Ember Gold).....\$159.00/pr.

## KICK PANEL INSULATION

Die-cut from the correct yellow insulation to properly fit behind the kick panels and reduce road noise.



#### 1970-74 E-Body (all models)

KI70CBJ.....\$21.00/kit

## FIREWALL INSULATION



Die-cut from black fiberboard with yellow insulation attached to properly fit the firewall. Clips included.

#### 1970-74 E-Body (all models)

FI70CBJW/O (no air).....\$54.00/kit  
FI70CBJW/A (with air).....\$54.00/kit

## OEM FIREWALL INSULATION

Firewalls are cut and punched with standard factory holes and are shipped ready-to-install with the appropriate "period" insulation attached.

#### 1970-74 E-Body

FI70CBJO (no air).....\$179.00/pr.

## DOOR SILL PLATES



Machine stamped aluminum sill plates cover the edge of the carpet securing it to the lower door frame section. Available for 2-door models only. \* Do not come with screws, must supply own.

#### 1970-74 E-Body

SP70CBJ (Repro).....\$129.00/pr.







# LEGENDARY'S CUSTOM VINTAGE RUBBER STYLE FLOORMATS

## DESIGNED TO FIT WHOLE FLOORPAN OF CAR LOGOS ON FRONT AND REAR MATS

How many times have you wished for automotive floor mats that have floorpan shapes, that are easily cleanable and also have that "factory original" styling that would make you proud to display them in your classic car? Our "Custom Vintage" rubber style floor mats will please the most discriminating buyer and provide years of carefree use.

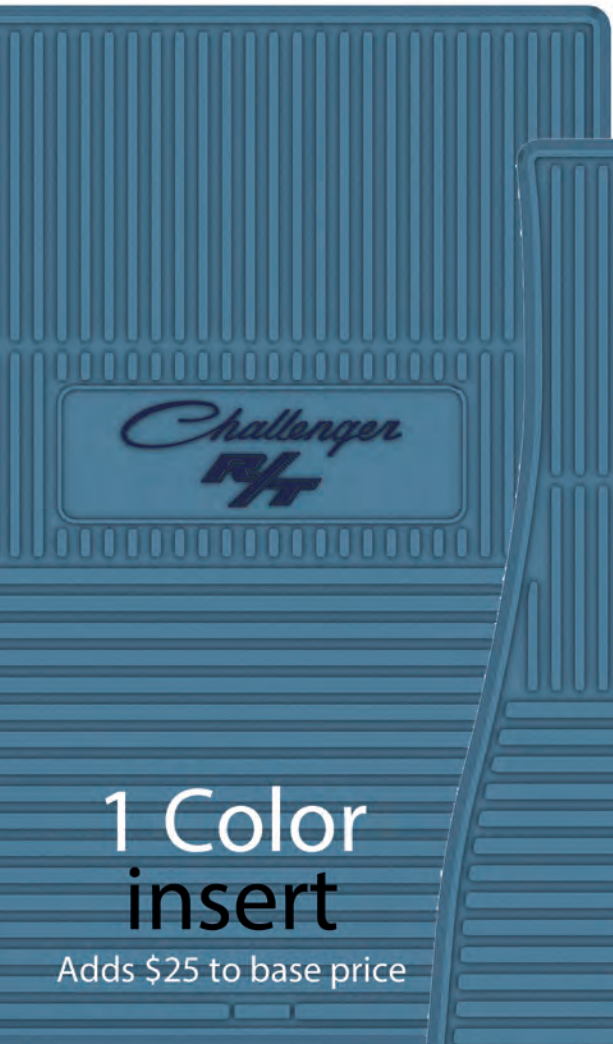


[www.legendaryautointeriors.com](http://www.legendaryautointeriors.com)



# CUSTOM DESIGN FLOORMATS

AVAILABLE IN ALL YEARS,  
MAKES AND MODELS



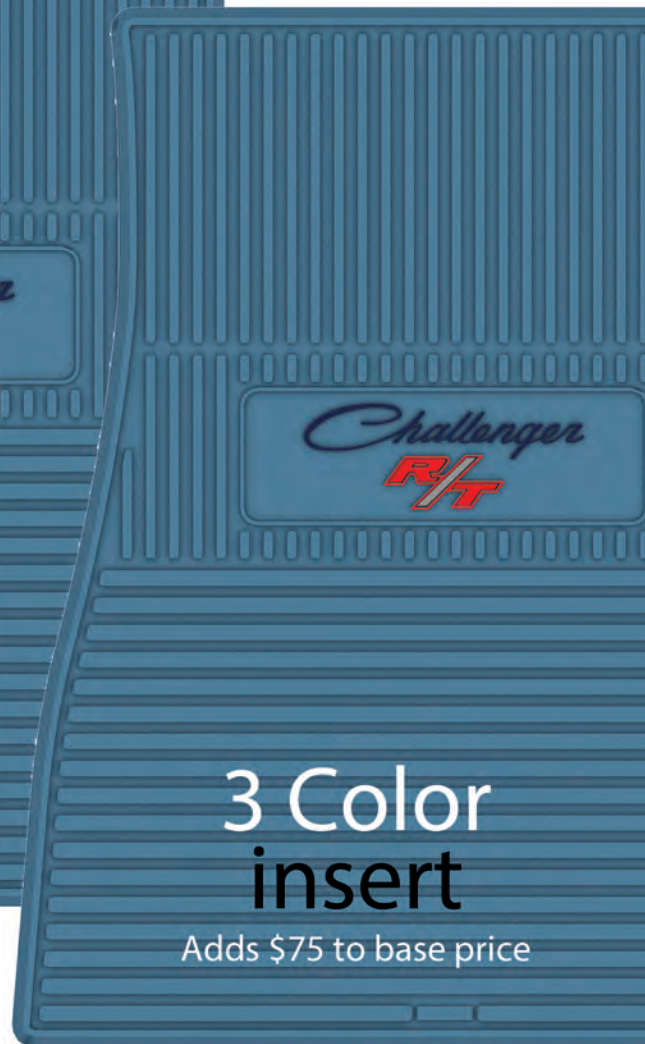
**1 Color  
insert**

Adds \$25 to base price



**2 Color  
insert**

Adds \$50 to base price



**3 Color  
insert**

Adds \$75 to base price

**DESIGN YOUR OWN  
INSERTS & COLORS**

[www.legendaryautointeriors.com](http://www.legendaryautointeriors.com)

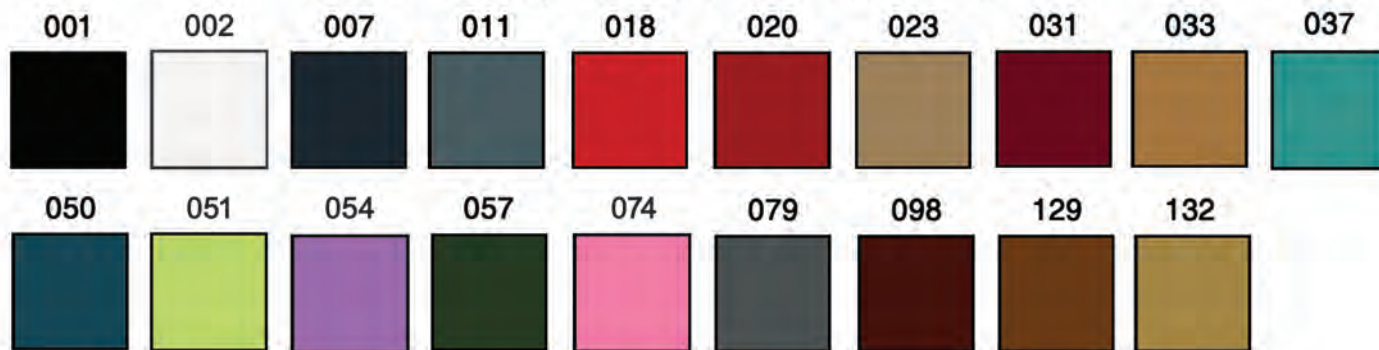




# FLOORMAT BASE & INSERT COLORS

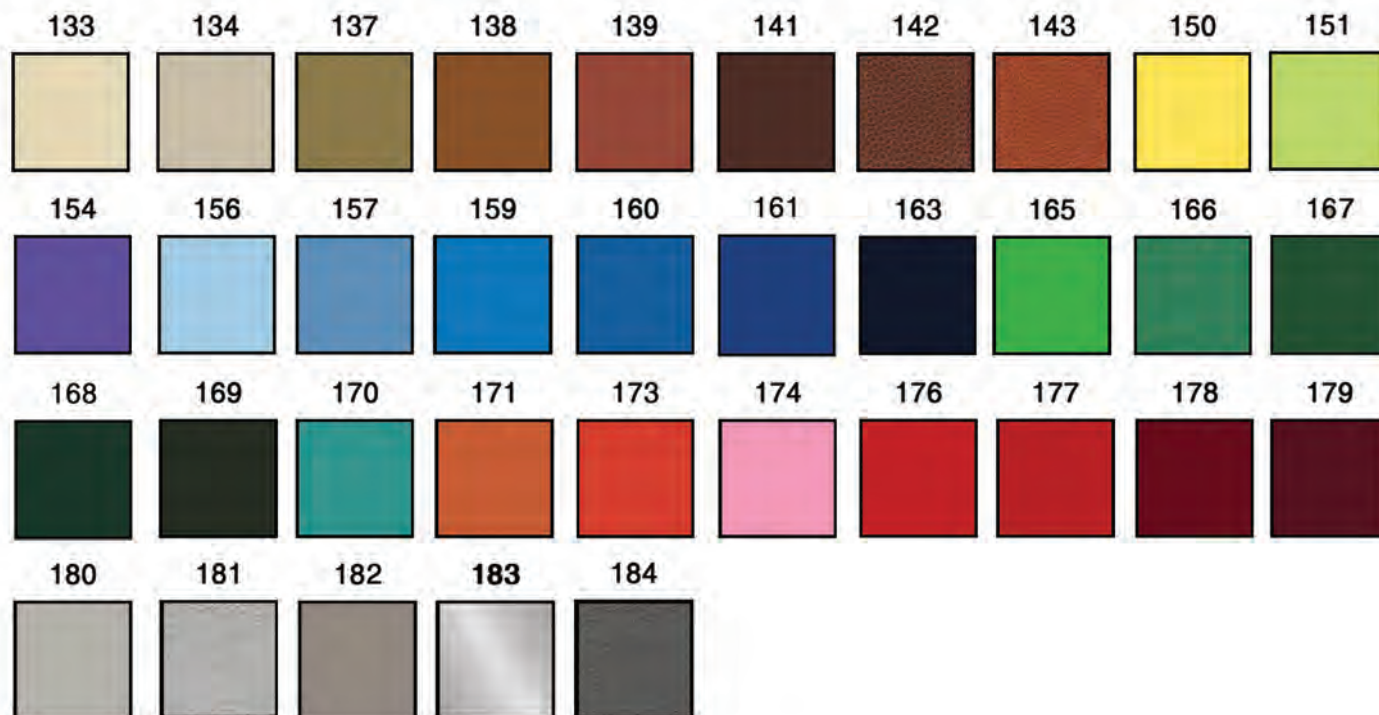
## BASE COLORS

001 Black - 002 White - 007 Dark Blue - 011 Medium Blue - 018 Bright Red - 020 Red - 023 Tan - 031 Maroon  
033 Dark Gold - 037 Aqua - 050 Turquoise - 051 Lime Green - 054 Purple - 057 Dk Olive Green  
074 Pink - 079 Gray - 098 Brown - 129 Dark Saddle - 132 Gold



## INSERT COLORS

133 Cream - 134 Sandalwood - 137 Aztec Gold - 138 Buckskin - 139 Sienna - 141 Coffee Bean - 142 Football  
143 Basketball - 150 Lemon Twist - 151 Mellow Yellow - 154 Plum Crazy - 156 Sky Blue - 157 Light Blue  
159 Pacific Blue - 160 Caribbean Blue - 161 Royal Blue - 163 Navy Blue - 165 Sassy Grass - 166 Pine  
167 Mint Green - 168 Hunter Green - 169 Antique Green - 170 Aqua Marine - 171 Mango - 173 Sunset Orange  
174 Panther Pink - 176 Cherry Red - 177 Cranberry - 178 Razzberry - 179 Garnet - 180 Smoke  
181 Platinum - 182 Medium Grey - 183 Silver - 184 Charcoal



**\*Note - To order mats with colored inserts please call our sales department**

Actual colors will vary from samples on this page. Contact  
our Sample Request Department for actual color samples at  
1-800-363-8804 or send us an email through our Sample  
Request Center on our website at [www.legendaryautointeriors.com](http://www.legendaryautointeriors.com)

**Legendary**  
**AUTO INTERIORS LTD.**



# 1970-74 PLYMOUTH BARRACUDA & CUDA



[www.legendariautointeriors.com](http://www.legendariautointeriors.com)

**FLOORMAT PRICING:**  
**ALL COLORS - \$229.00/set**



**ALL NEW  
DESIGN!!**

#### 1970 Barracuda by Plymouth

FMCU0002001(C) - Automatic FMCU0002002(C) - 4-speed

#### 1970 Barracuda Gran Coupe

FMCU0003001(C) - Automatic FMCU0003002(C) - 4-speed

#### 1971 Barracuda Gran Coupe

FMCU0008001(C) - Automatic FMCU0008002(C) - 4-speed

#### 1971-74 Barracuda by Plymouth

FMCU0007001(C) - Automatic FMCU0007002(C) - 4-speed

#### 1970 AAR Cuda

FMCU0004001(C) - Automatic FMCU0004002(C) - 4-speed

#### 1970-74 Cuda

FMCU0005001(C) - Automatic FMCU0005002(C) - 4-speed

#### 1970-74 Cuda by Plymouth

FMCU0006001(C) - Automatic FMCU0006002(C) - 4-speed

#### 1970-74 Pentastar

FMCDP006001(C) - Automatic FMCDP006002(C) - 4-speed

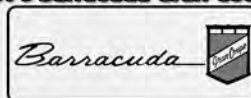
1970-74 Pentastar



1970 Barracuda



1970 Barracuda Gran Coupe



1971-74 Barracuda



1971 Barracuda Gran Coupe



1970-74 Cuda



1970 AAR Cuda



1970-74 Cuda by Plymouth





# 1970-74 DODGE CHALLENGER

**SURE-GRIP™**  
CONCRETE AUTO-SKID BACKING



[www.legendariautointeriors.com](http://www.legendariautointeriors.com)

**FLOORMAT PRICING:**  
**ALL COLORS - \$229.00/set**

**ALL NEW  
DESIGN!!**

## 1970-74 Challenger

FMCH0002001(C) - Automatic      FMCH0002002(C) - 4-speed

## 1970 Challenger SE

FMCH0003001(C) - Automatic      FMCH0003002(C) - 4-speed

## 1970 Challenger T/A

FMCH0004001(C) - Automatic      FMCH0004002(C) - 4-speed

## 1970-71 Challenger R/T

FMCH0005001(C) - Automatic      FMCH0005002(C) - 4-speed

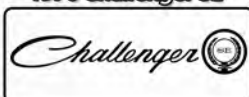
## 1970-74 Pentastar

FMCDP006001(C) - Automatic      FMCDP006002(C) - 4-speed

1970-74 Challenger



1970 Challenger SE



1970 Challenger T/A



1970-71 Challenger R/T



1970-74 Pentastar







\*\*\*

Providing the automotive industry  
with the world's highest quality  
soft trim products and services  
RIGHT HERE AT HOME

\*\*\*

STILL ASSEMBLED AND  
MADE IN THE ★★★★★  
**USA** 

\*\*\*

THERE REALLY IS A DIFFERENCE!!

\*\*\*

*Legendary*  
**AUTO INTERIORS LTD.®**

[www.legendaryautointeriors.com](http://www.legendaryautointeriors.com)





# NOW AVAILABLE...

## 2006-24 CHALLENGER & CHARGER!!



OFFICIAL  
LICENSED  
PRODUCT

### FLEXTREAD®

CHARGER

CHALLENGER

Challenger

SXT

GT

DAYTONA

R/T

R/T

T/A

SRT

SRT

HELLCAT

SRT

SCAT PACK

392  
HEMI

DEMON

HEMI

DODGE

1-833-700-3539

WWW.FLEXTREADMATS.COM



# **FLEXTREAD**

**NOW AVAILABLE...  
FLOOR MATS FOR  
2009-24 RAM 1500/2500/3500**



**RAM**



**RAM**

**BIGHORN**

**LONGHORN**

**LARAMIE**



**POWER  
WAGON**

**REBEL**

**WARLOCK**



**TRX**




**833-700-3539    [WWW.FLEXTREADMATS.COM](http://WWW.FLEXTREADMATS.COM)**





# DASHES, CONSOLES AND ACCESSORIES

 [facebook.com/legendaryautointeriors](https://facebook.com/legendaryautointeriors)  
 [twitter.com/legendaryautoin](https://twitter.com/legendaryautoin)

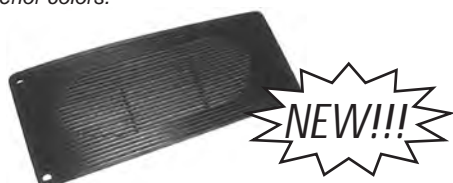
 [www.legendaryautointeriors.com](http://www.legendaryautointeriors.com)  
 [instagram.com/legendaryautointeriorsltd](https://instagram.com/legendaryautointeriorsltd)  
 [youtube.com/user/legendaryauto](https://youtube.com/user/legendaryauto)



# Dodge & Plymouth E-Body

## DASH PAD SPEAKER GRILL

Reproduction speaker grill insert for 1970-74 Barracuda and Challenger models. This grill insert covers the center speaker on the top of the dash pad protecting it from damage. Fits the center speaker only on both 1 and 3 speaker models. Available in black only but can be painted to match interior colors.



### 1970 Challenger

**DP70CJSPGRILL01** .....\$99.00/ea.  
 Fits center speaker only on 3 speaker dash pads.

### 1970-74 Barracuda

**1971-74 Challenger**  
**DP70CBJSPGRILL01** .....\$99.00/ea.  
 Fits center speaker only on 3 speaker dash pads.

## UNDERDASH INSULATION

Die-cut to original specifications, this insulation eliminates underdash noise and vibration.

### 1970-74 E-Body (all models)

**UD70CBB** .....\$32.00/kit

## E-BODY "SHAKER" UNDER DASH CABLE

One of the two cables that operate the cold and warm air doors on the E-Body (Challenger & Barracuda) Shaker hood. Includes the foil "CARB AIR" applique and the firewall grommet.

### 1970-71 E-Body "Shaker"

**UD70E-HCD** .....\$79.00/ea.

## E-BODY "SHAKER" UNDER HOOD CABLE

One of the two cables that operate the cold and warm air doors on the E-Body (Challenger & Barracuda) Shaker hood. Includes the foil "CARB AIR" applique and the firewall grommet.

### 1970-71 E-Body "Shaker"

**UD70E-HC** .....\$39.00/ea.

## HEMI CHOKE CABLE

Underdash cable that operates the choke on 1971 Hemi cars. Includes correct foil "CHOKE" applique and firewall grommet.

### 1971 B & E-Body HEMI

**UD71BE-HEMI** .....\$88.00/ea.

## "CHOKE" APPLIQUE

Correct red foil "CHOKE" applique for underdash cable that operates the choke on 1971 Hemi cars.

### 1971 E-Body

**UD71BE-CHOKE** .....\$12.00/ea.

## VENT CABLES



Underdash vent cable with correct "square" knob and white VENT marking for 1970 E-Bodies with and without AC.

### 1970 E-Body

**UD70E-VCL** (left hand) .....\$79.00/ea.  
**UD70E-VCR** (right hand) .....\$79.00/ea.



Underdash vent cable with correct round knob knurled edge for 1971 E-Bodies without AC.

### 1971 E-Body

**UD71E-VCL** (left hand) .....\$69.00/ea.  
**UD71E-VCR** (right hand) .....\$69.00/ea.

## PILLAR POST MOLDINGS



Reproduction plastic pillar post moldings for 1970-74 E-Body models.

### 1970-Early 1971 E-Body (Injection Molded As-Original)

**PP70CBJM100** .....\$169.00/pr.

### Mid 1971-74 E-Body (Injection Molded As-Original)

**PP71CBJM100** .....\$169.00/pr.

## WOODGRAIN CONSOLE INSERTS



Die-cut vinyl woodgrain inserts for automatic and 4-speed models made in original grain and color. Adhesive backing makes them easy to install.

### 1970-74 Barracuda & Challenger

**WC70EBA** (automatic) .....\$43.00/ea.  
**WC70EBS** (manual) .....\$43.00/ea.

## WOODGRAIN DASH INSERTS



Die-cut vinyl woodgrain inserts are made with the closest match to the original in grain and color. Adhesive backing makes them easy to install.

### 1970 Challenger

**WC70CJ3D** (3 cluster) .....\$43.00/ea.  
**WC70CJ4D** (4 cluster) (shown) .....\$43.00/ea.  
 Hardtop models w/o rear defrost use 3 cluster style.  
 Conv. & hardtop models with rear defrost use 4 cluster style.

### 1971-74 Challenger

**WC71CJ3D** (3 cluster) .....\$54.00/ea.  
**WC71CJ4D** (4 cluster) .....\$54.00/ea.  
 Hardtop models w/o rear defrost use 3 cluster style.  
 Conv. & hardtop models with rear defrost use 4 cluster style.

### 1970 Barracuda

**WC70CB3D** (3 cluster) .....\$43.00/ea.  
**WC70CB4D** (4 cluster) .....\$43.00/ea.  
 Hardtop models w/o rear defrost use 3 cluster style.  
 Conv. & hardtop models with rear defrost use 4 cluster style.

### 1973-74 Barracuda

**WC73CB3D** (3 cluster) .....\$54.00/ea.  
**WC73CB4D** (4 cluster) .....\$54.00/ea.  
 Hardtop models w/o rear defrost use 3 cluster style.  
 Hardtop models with rear defrost use 4 cluster style.





## GLOVEBOX LINERS

Glovebox liners are die-cut and pre-stapled with mounting hardware attached for easy installation. Fuse box doors included where applicable.



**1970-74 Barracuda & Challenger**  
GB70BJ..... \$32.00/ea.

## AUTOMATIC SHIFTER KNOB



Reproduction woodgrain shifter knob used in selected 1969-74 A & E-Body models with console-shifted automatics. Black push button and spring included in kit.

**TN69AABE-SHIFT** ..... \$79.00/kit

## PISTOL GRIP SHIFTER & LENS



Reproduction injection-molded plastic pistol grip shifter for 1970-74 B & E-Body 4-speed models. Pistol and lens sold seperately.

**TN70BE4SP-GRIP** ..... \$89.00/ea.  
**TNGRIPLENS** ..... \$15.00/ea.

## SHIFTER BOOTS & BEZEL

Rubber shifter boots and bezels as original. Upper boots are for models equipped with center consoles while lower boots are for manual transmission models without a center console. Lower shift boots use a bezel that feature a chrome finish as the originals.



**1970-74 E-Body (all models)**  
**TN70BE-BOOT-L** (w/o console)..... \$69.00/ea.



**1970-74 E-Body (all models)**  
**TN70BE-BOOTBEZ** (w/o console)..... \$29.00/ea.



Clutch release fork boot for 1964-74 A & E-Body 4-Speed & 3-Speed column shift

**1964-74 A,B,C & E-Body**  
**TN64ABCE-BOOT** ..... \$39.00/ea.

## PEDAL PADS & BEZELS

Reproduction pedal pads and bezels for accelerators, brake/clutch and parking brake on A & E-Body models.

### ACCELERATORS & BEZELS



**1970 E-Body**  
**PB70CBJ-A** (pad) ..... \$69.00/ea.  
**PB70E-ABEZ** (bezel) (shown) ..... \$19.00/ea.

### 4-SPEED CLUTCH /BRAKE PADS & BEZELS



**1970-72 E-Body**  
**PB70BE4SP-B/C** (pad) (shown) ..... \$29.00/ea.  
**PB70BE4SP-B/CBEZ** (bezel) ..... \$15.00/ea.  
**1973-74 E-Body**  
**PB71ABE4SP-B/C** (pad) ..... \$10.00/ea.


### AUTOMATIC BRAKE PADS & BEZELS

**1970-72 E-Body**  
**PB70BEA-B** (pad) ..... \$19.00/ea.  
**PB70BEA-BBEZ** (bezel) ..... \$19.00/ea.

### PARKING BRAKE PADS

**1970-74 E-Body**  
**PB70BE-P** (pad) ..... \$29.00/ea.  
**PB70BE-PBEZ** (bezel) ..... \$15.00/ea.





\*\*\*

Providing the automotive industry  
with the world's highest quality  
soft trim products and services  
RIGHT HERE AT HOME

\*\*\*



\*\*\*

THERE REALLY IS A DIFFERENCE!!

\*\*\*

*Legendary*  
**AUTO INTERIORS LTD.®**



[www.legendaryautointeriors.com](http://www.legendaryautointeriors.com)










# HEADLINERS AND TRIM ACCESORIES

 [facebook.com/legendaryautointeriors](https://facebook.com/legendaryautointeriors)  
 [twitter.com/legendaryautoin](https://twitter.com/legendaryautoin)

 [www.legendaryautointeriors.com](http://www.legendaryautointeriors.com)  
 [instagram.com/legendaryautointeriorsltd](https://instagram.com/legendaryautointeriorsltd)  
 [youtube.com/user/legendaryauto](https://youtube.com/user/legendaryauto)



# Headliner Grains and Colors

Legendary Auto Interiors headliners are manufactured to original specifications and are available in a variety of colors in Perforated or Non-Perforated pattern. Each headliner is assembled with heavy-duty stitching.

If your year/model is not listed please contact our sales department for assistance on availability. Please specify perforated or non-perforated at time of order. Sample approval is highly recommended for colors other than black.

## STANDARD *style*

### Non-Perforated

<b>01</b> <b>Black</b>	<b>02</b> <b>White</b>	<b>03</b> <b>Red</b>	<b>07</b> <b>Dark Blue</b>
<b>11</b> <b>Medium Blue</b>	<b>13</b> <b>Dark Green</b>	<b>17</b> <b>Buckskin</b>	<b>18</b> <b>Light Blue</b>
<b>20</b> <b>Bright Red</b>	<b>31</b> <b>Maroon</b>	<b>38</b> <b>Sandalwood</b>	<b>98</b> <b>Brown</b>

### Perforated

<b>01</b> <b>Black</b>	<b>02</b> <b>White</b>	<b>03</b> <b>Red</b>	<b>07</b> <b>Dark Blue</b>
<b>11</b> <b>Medium Blue</b>	<b>13</b> <b>Dark Green</b>	<b>17</b> <b>Buckskin</b>	<b>18</b> <b>Light Blue</b>
<b>20</b> <b>Bright Red</b>	<b>31</b> <b>Maroon</b>	<b>38</b> <b>Sandalwood</b>	<b>98</b> <b>Brown</b>

## OEM *style*

Legendary Auto Interiors, Ltd. is pleased to announce another first in the industry. "As Original" headliners and sail panels are now available 1970-72 Dodge and Plymouth cars. All new headliner styles have a heavier cotton/poly cloth backing with more vibrant colors and finishes like the ORIGINAL!! This will assure longevity to these new products as the vinyl and backing are much higher quality than other vinyls offered in today's automotive marketplace.



<b>101</b> <b>Black</b>	<b>102</b> <b>White</b>	<b>107</b> <b>Dark Blue</b>
<b>110</b> <b>Bright Blue</b>	<b>113</b> <b>Dark Green</b>	<b>122</b> <b>Burnt Orange</b>



## HEADLINERS

### 1970-71 Barracuda

#### 5 Bow - (Perforated Grain)

HL70CB01 (Black)	\$169.00/ea.
HL70CB02 (White)	\$169.00/ea.
HL70CB13 (Dark Green)	\$169.00/ea.
HL70CB20 (Bright Red)	\$169.00/ea.
HL70CB98 (Dark Brown)	\$169.00/ea.
<b>5 Bow - OEM Style - (Fine Pembroke Grain)</b>	
HL70CB101 (Black)	\$209.00/ea.
HL70CB102 (White)	\$209.00/ea.
HL70CB110 (Bright Blue)	\$209.00/ea.
HL70CB113 (Dark Green)	\$209.00/ea.

For 1971 Barracuda please specify 4 or 5-bows.

### 1971-74 Barracuda

#### 4 Bow - (Perforated Grain)

HL71CB01 (Black)	\$169.00/ea.
HL71CB02 (White)	\$169.00/ea.
HL71CB13 (Dark Green)	\$169.00/ea.
HL71CB38 (Sandalwood)	\$169.00/ea.
HL71CB98 (Dark Brown)	\$169.00/ea.

#### 4 Bow - (Non-Perforated Grain)

HL71CB01NP (Black)	\$169.00/ea.
HL71CB02NP (White)	\$169.00/ea.
HL71CB07NP (Dark Blue)	\$169.00/ea.
HL71CB13NP (Dark Green)	\$169.00/ea.
HL71CB38NP (Sandalwood)	\$169.00/ea.

#### 1971-72 4 Bow - OEM Style (Fine Pembroke Grain)

HL71CB101 (Black)	\$209.00/ea.
HL71CB102 (White)	\$209.00/ea.
HL71CB110 (Bright Blue)	\$209.00/ea.
HL71CB113 (Dark Green)	\$209.00/ea.

For 1971 Barracuda please specify 4 or 5-bows.

### 1970-71 Challenger

#### 5 Bow - (Perforated Grain)

HL70CJ01 (Black)	\$169.00/ea.
HL70CJ02 (White)	\$169.00/ea.
HL70CJ13 (Dark Green)	\$169.00/ea.
HL70CJ20 (Bright Red)	\$169.00/ea.
HL70CJ98 (Dark Brown)	\$169.00/ea.

#### 5 Bow - OEM Style - (Fine Pembroke Grain)

HL70CJ101 (Black)	\$209.00/ea.
HL70CJ102 (White)	\$209.00/ea.
HL70CJ110 (Bright Blue)	\$209.00/ea.
HL70CJ113 (Dark Green)	\$209.00/ea.
HL70CJ122 (Burnt Orange)	\$209.00/ea.

For 1971 Challenger please specify 4 or 5-bows.

### 1971-74 Challenger

#### 4 Bow - (Perforated Grain)

HL71CJ01 (Black)	\$169.00/ea.
HL71CJ02 (White)	\$169.00/ea.
HL71CJ13 (Dark Green)	\$169.00/ea.
HL71CJ38 (Sandalwood)	\$169.00/ea.
HL71CJ98 (Dark Brown)	\$169.00/ea.

#### 4 Bow - (Non-Perforated Grain)

HL71CJ01NP (Black)	\$169.00/ea.
HL71CJ02NP (White)	\$169.00/ea.
HL71CJ07NP (Dark Blue)	\$169.00/ea.
HL71CJ13NP (Dark Green)	\$169.00/ea.
HL71CJ38NP (Sandalwood)	\$169.00/ea.

#### 1971-72 4 Bow - OEM Style (Fine Pembroke Grain)

HL71CJ101 (Black)	\$209.00/ea.
HL71CJ102 (White)	\$209.00/ea.
HL71CJ110 (Bright Blue)	\$209.00/ea.
HL71CJ113 (Dark Green)	\$209.00/ea.

For 1971 Challenger please specify 4 or 5-bows.

## HEADLINER RETAINING CLIPS



Metal u-shaped retaining clips slide onto the edge of the roof-rail and help hold the headliner in place.

HLCLIP (Pkg/12)	\$5.00/pk.
-----------------	------------

## HEADLINER BOW RETAINER CLIPS



Metal retainer clips slide onto the edge of the roof-rail and help secure headliner bows during installation of headliner.

HLRETAIN (Pkg/10)	\$39.00/pk.
-------------------	-------------

## HEADLINER INSULATION

Headliner insulation kits glue directly to the roof and provide protection from noise, heat and cold infiltration.

### 1970-74 E-Body

HI70CBJ	\$32.00/kit
---------	-------------

## NOS HEADLINERS

Some colors and grains are not reproduced in today's market. We offer NOS (New Old Stock) headliners for those extremely limited items. Many years and models are available. Please call for assistance.

HLNOS	\$850.00/ea.
-------	--------------

Please specify year and model.

## FOAM-BACKED CLOTH HEADLINER

Replacement foam-backed headliner material for 1973 and up A-Body, 1970 Barracuda Gran Coupe and 1970 Challenger SE models with overhead consoles and cardboard style headliners. Available in a variety of colors, sample approval is highly recommended for colors other than black.

HLROLL(C)	\$150.00/roll
-----------	---------------

## SAIL PANEL BOARDS



Die-cut to original size and shape, these reproduction sail panel boards replace warped or water damaged originals. Available covered with headliner material or plain where applicable by year and model.

NOTE: Due to a special proprietary process used in-house, we guarantee the vinyl WILL NOT bubble or delaminate from the board.

### 1970-74 Barracuda

#### SB70CBPLAIN (Plain)

(Perforated Grain)	\$33.00/pr.
SB70CB00001 (Black)	\$66.00/pr.
SB70CB00002 (White)	\$66.00/pr.
SB70CB00013 (Dark Green)	\$66.00/pr.
SB70CB00020 (Bright Red)	\$66.00/pr.
SB70CB00038 (Sandalwood)	\$66.00/pr.
SB70CB00098 (Brown)	\$66.00/pr.

#### (Non-Perforated Grain)

SB70CB00001NP (Black)	\$66.00/pr.
SB70CB00002NP (White)	\$66.00/pr.
SB70CB00007NP (Dark Blue)	\$66.00/pr.
SB70CB00013NP (Dark Green)	\$66.00/pr.
SB70CB00038NP (Sandalwood)	\$66.00/pr.

#### OEM Style - (Fine Pembroke Grain)

SB70CB000101 (Black)	\$97.00/pr.
SB70CB000102 (White)	\$97.00/pr.
SB70CB000110 (Bright Blue)	\$97.00/pr.
SB70CB000113 (Dark Green)	\$97.00/pr.

### 1970-74 Challenger

SB70CJPLAIN (Plain)	\$33.00/pr.
---------------------	-------------

## DOMELIGHT LENS



Round plastic dome light lens for 1966-74 A & E-Body models.

LL66ABCE-DOME	\$10.00/ea.
---------------	-------------





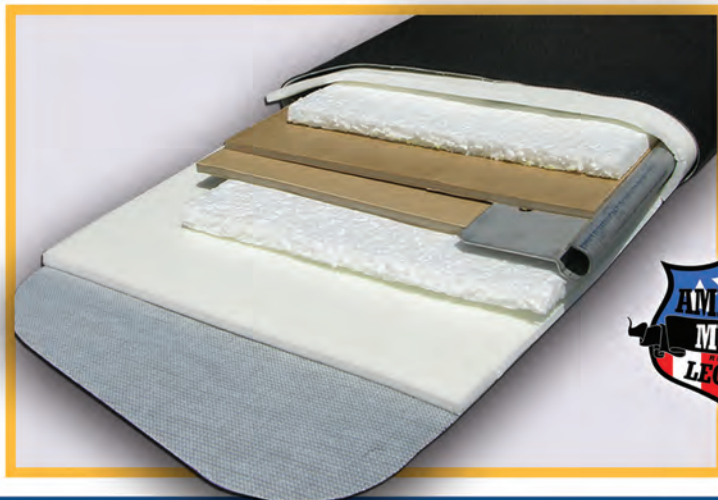
# SUNVISORS

Original reproduction sunvisors are made with the correct grains and vinyl colors as applicable by year/make/model to compliment and match your Legendary interior. Superior materials and technology with World Class craftsmanship create the highest quality sunvisors available. Original mounting hardware and metal rod must be reused. Please specify hardtop or convertible and color at time of order.

- Factory correct size, shape, colors and grains by year, make and model
- Original fit and appearance
- Custom colors and grains available
- Limited Lifetime Warranty (*First and only in the industry!!!*)
- Correct multi layer construction applicable by year, make and model
- Available with or without cut-outs for driver and passenger mirror options



***Correct multi layer construction & shape applicable by year, make, model & body style***





## SUNVISORS

### E-BODY MODELS

#### 1970-71 Barracuda & Challenger Hardtop (Coachman Grain)

SV70CBJ100-PA (Black) .....	\$168.00/pr.
SV70CBJ200-PA (White) .....	\$168.00/pr.
SV70CBJ338-PA (Bright Blue).....	\$168.00/pr.
SV70CBJ340-PA (Bright Blue).....	\$168.00/pr.
SV70CBJ434-PA (Dark Met Green).....	\$168.00/pr.
SV70CBJ452-PA (Dark Met Green).....	\$168.00/pr.
SV70CBJ540-PA (Burnt Orange).....	\$168.00/pr.
SV70CBJ550-PA (Red).....	\$176.00/pr. (L4)
SV70CBJ656-PA (Brown).....	\$168.00/pr.
SV70CBJ664-PA (Brown).....	\$176.00/pr. (L4)
SV70CBJ666-PA (Ember Gold).....	\$168.00/pr.

#### Convertible (Coachman Grain)

SV70CBJ100C-PA (Black).....	\$168.00/pr.
SV70CBJ200C-PA (White) .....	\$168.00/pr.
SV70CBJ338C-PA (Bright Blue) .....	\$168.00/pr.
SV70CBJ340C-PA (Bright Blue).....	\$168.00/pr.
SV70CBJ434C-PA (Dark Met Green)...	\$168.00/pr.
SV70CBJ452C-PA (Dark Met Green)...	\$168.00/pr.
SV70CBJ540C-PA (Burnt Orange) .....	\$168.00/pr.
SV70CBJ550C-PA (Red).....	\$176.00/pr. (L4)
SV70CBJ656C-PA (Brown) .....	\$168.00/pr.
SV70CBJ664C-PA (Brown) .....	\$176.00/pr. (L4)
SV70CBJ666C-PA (Ember Gold) .....	\$168.00/pr.

#### 1972-73 Barracuda & Challenger (Coachman Grain)

SV72CBJ100-PA (Black).....	\$168.00/pr.
SV72CBJ200-PA (White) .....	\$168.00/pr.
SV72CBJ340-PA (Bright Blue).....	\$168.00/pr.
SV72CBJ444-PA (Dark Green).....	\$168.00/pr.
SV72CBJ666-PA (Ember Gold).....	\$168.00/pr.

#### 1974 Barracuda & Challenger (Oxford Grain)

SV74CBJ100-PA (Black).....	\$168.00/pr.
SV74CBJ200-PA (White) .....	\$168.00/pr.
SV74CBJ360-PA (Lagoon Blue) .....	\$176.00/pr. (L4)
SV74CBJ450-PA (Jade Green).....	\$176.00/pr. (L4)

### RUBBER SUNVISOR TIPS



Dodge & Plymouth rubber sunvisor tips for 1966 and up models with 2-pin sunvisors and a center mounted sunvisor retainer over the rearview mirror.

SVTIP-RUBBER.....	\$3.00/pr.
-------------------	------------







# PACKAGE TRAYS AND JUTE INSULATION

Die-cut to original specifications, these reproductions of the original panels go between the top of the rear seat and the back window. Colors are year specific and are available with or without speaker grill cutouts. Die-cut jute insulation helps reduce the amount of noise and heat that would come from the trunk compartment.

## **1970-74 Barracuda**

### **Hardtop w/o Cuts**

PT70CB100N (Black)	\$79.00/ea.
PT70CB338N (Bright Blue)	\$79.00/ea.
PT70CB340N (Bright Blue)	\$79.00/ea.
PT70CB360N (Lagoon Blue)	\$79.00/ea.
PT70CB434N (Dark Metallic Green)	\$79.00/ea.
PT70CB444N (Dark Green)	\$79.00/ea.
PT70CB450N (Jade Green)	\$79.00/ea.
PT70CB452N (Dark Metallic Green)	\$79.00/ea.
PT70CB540N (Burnt Orange)	\$79.00/ea.
PT70CB550N (Red)	\$79.00/ea.
PT70CB656N (Brown)	\$79.00/ea.
PT70CB664N (Brown)	\$79.00/ea.
PT70CB666N (Ember Gold)	\$79.00/ea.

### **Hardtop w/ Cuts**

PT70CB100 (Black)	\$119.00/ea.
PT70CB338 (Bright Blue)	\$119.00/ea.
PT70CB340 (Bright Blue)	\$119.00/ea.
PT70CB360 (Lagoon Blue)	\$119.00/ea.
PT70CB434 (Dark Metallic Green)	\$119.00/ea.
PT70CB444 (Dark Green)	\$119.00/ea.
PT70CB450 (Jade Green)	\$119.00/ea.
PT70CB452 (Dark Metallic Green)	\$119.00/ea.
PT70CB540 (Burnt Orange)	\$119.00/ea.
PT70CB550 (Red)	\$119.00/ea.
PT70CB656 (Brown)	\$119.00/ea.
PT70CB664 (Brown)	\$119.00/ea.
PT70CB666 (Ember Gold)	\$119.00/ea.
PT70CBJ (jute insulation)	\$27.00/ea.

## **1970-74 Challenger**

### **Hardtop w/o Cuts**

PT70CJ100N (Black)	\$79.00/ea.
PT70CJ338N (Bright Blue)	\$79.00/ea.
PT70CJ340N (Bright Blue)	\$79.00/ea.
PT70CJ360N (Lagoon Blue)	\$79.00/ea.
PT70CJ434N (Dark Metallic Green)	\$79.00/ea.
PT70CJ444N (Dark Green)	\$79.00/ea.
PT70CJ450N (Jade Green)	\$79.00/ea.
PT70CJ452N (Dark Metallic Green)	\$79.00/ea.
PT70CJ540N (Burnt Orange)	\$79.00/ea.
PT70CJ550N (Red)	\$79.00/ea.
PT70CJ656N (Brown)	\$79.00/ea.
PT70CJ664N (Brown)	\$79.00/ea.
PT70CJ666N (Ember Gold)	\$79.00/ea.

### **Hardtop w/ Cuts**

PT70CJ100 (Black)	\$119.00/ea.
PT70CJ338 (Bright Blue)	\$119.00/ea.
PT70CJ340 (Bright Blue)	\$119.00/ea.
PT70CJ360 (Lagoon Blue)	\$119.00/ea.
PT70CJ434 (Dark Metallic Green)	\$119.00/ea.
PT70CJ444 (Dark Green)	\$119.00/ea.
PT70CJ450 (Jade Green)	\$119.00/ea.
PT70CJ452 (Dark Metallic Green)	\$119.00/ea.
PT70CJ540 (Burnt Orange)	\$119.00/ea.
PT70CJ550 (Red)	\$119.00/ea.
PT70CJ656 (Brown)	\$119.00/ea.
PT70CJ664 (Brown)	\$119.00/ea.
PT70CJ666 (Ember Gold)	\$119.00/ea.
PT70CJJ (jute insulation)	\$27.00/ea.



## TRUNK DIVIDERS & JUTE INSULATION



Die-cut reproduction of the black fiberboard panel that separates the rear seat from the trunk compartment.  
Die-cut jute Insulation helps reduce the amount of noise and heat from the trunk compartment.

### 1970-74 Barracuda 1970-74 Challenger

TD70CBJ .....\$37.00/ea.  
TD70CBJJ (jute insulation) .....\$24.00/ea.

## SPARE TIRE COVER



Add the finishing touch to your trunk with a spare tire cover to match your trunk mat. Made from the same trunk mat material, these covers will fit any vehicle with a floor mounted spare tire. Please specify material pattern at time of order.

ST14-15GP (Gray Plaid) .....\$65.00/ea.  
ST14-15HT (Houndstooth) .....\$65.00/ea.  
ST14-15HB (Herringbone) .....\$65.00/ea.  
ST14-15TP (Tan Plaid) .....\$65.00/ea.  
1970 and later E-Body models used Herringbone.

## TRUNK MATS

### 1970-74 Barracuda

TM70CBHB (Hardtop & Convertible) ..\$99.00/ea.  
1970 -74 models used Herringbone only.

### 1970-74 Challenger

TM70CJHB (Hardtop & Convertible) ..\$99.00/ea.  
1970-74 models used Herringbone only.

## TRUNK MAT MATERIAL



Legendary Auto Interiors offers an uncut roll of trunk mat material in Houndstooth, Gray or Tan Plaid and Herringbone for models not offered. You cut to size this 52" x 80" roll.

TMROLLHT (Houndstooth) .....\$99.00/ea.  
TMROLLGP (Gray Plaid) (shown) .....\$99.00/ea.  
TMROLLTP (Tan Plaid) .....\$99.00/ea.  
TMROLLHB (Herringbone) .....\$99.00/ea.

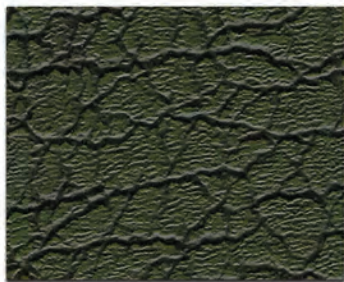






# VINYL TOPS

Legendary Auto Interiors, Ltd. "fitted" vinyl tops are manufactured to original specifications with the correct 100% cotton drill backing that gives trouble free installation and long term durability. All seams are double stitched and die-electrically heat-sealed insuring accurate deck width and seam durability. Each top is individually cut and fit for each specific year, make and model to give that perfect Legendary fit. Every Legendary vinyl top carries a (5) year factory warranty, the best in the industry!!



Boar Grain  
(1970-74)



Gator Grain  
(1970)

## GATOR GRAIN

Gator Grain vinyl tops were first available after mid-year 1969 as a custom group package option for Dodge and Plymouth C-Body models only. In 1970 Dodge and Plymouth broadened the optional Gator Grain vinyl top availability to its B and E-Body lines. These rare and highly valued vehicles are properly designated with the V1G vinyl top trim code found on the car's fender tag. Like all other Legendary Auto Interiors, Ltd. products, we have gone to great lengths accurately reproducing this most sought after material in the Mopar world. Gator grain tops are the correct "Antiqued" brown color with slight green tinting and have 1200 hours of level 5 UV (Ultra Violet) light protection with a heavy-weight cloth backing.





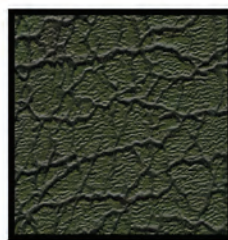
# ORIGINAL REPRODUCTION BOAR GRAIN



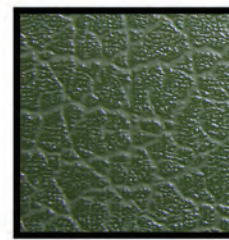
01 - Black



02 - White



03 - Antique Green



13 - Green

## AS-ORIGINAL WIDE SEAM VINYL TOPS

Exclusively for 1970-72 Challenger only





## VINYL TOPS

### E-BODY MODELS

#### 1970-72 Challenger

**VTL2J01** (Wide seam top 49" front & 64" rear center deck width w/ pillar post).....\$595.00/ea.

**VTL2J02** (Wide seam top 49" front & 64" rear center deck width w/ pillar post).....\$595.00/ea.

#### 1970-74 Barracuda

**1970-74 Challenger (1970 - Antique Green) (1971-73 - Green) (1973-74 - Black & White)**

**VTL1BJ01** (Narrow seam top 31 3/4" center deck width w/ pillar post).\$379.00/ea.

**VTL1BJ02** (Narrow seam top 31 3/4" center deck width w/ pillar post).\$379.00/ea.

**VTL1BJ03** (Narrow seam top 31 3/4" center deck width w/ pillar post).\$379.00/ea.

**VTL1BJ13** (Narrow seam top 31 3/4" center deck width w/ pillar post).....\$439.00/ea. **(L4)**

**VTL1BJ151** (**Gator Grain** 36" center deck width w/ pillar post).\$1295.00/ea. **(L1)**

### NOS VINYL TOPS

Chrysler offered special order vinyl top colors and grain options such as Gator, Tortoise, Gold Reptile and Mod along with many others that are no longer manufactured and have not been reproduced. In our efforts to better serve you in your restoration needs, NOS (New Old Stock) vinyl top material is continuously being looked for. Please call for more information.

**VTNOS** ..... \$1129.00/ea.

Please specify year/make/model, color, grain, with or without pillar posts, with or without rear valance & center deck width at time of order.

### SUN ROOF VINYL

Additional vinyl top material for 1969-74 A & E-Body models with factory power or manual sun roof option. Sun roof material is 30" x 48". Please specify at time of order.

#### 1970-72 Challenger

**VTSUNCJ01** (Black)..... \$80.00/ea.

**VTSUNCJ02** (White)..... \$80.00/ea.

### VINYL TOP TERMINOLOGY

**Pillar post** - The "A" pillar connects the roof to the body located between the windshield and door window. A vinyl top with pillar post runs all the way down the pillar to the bottom of the windshield.



**Valance** - This is the area under the rear window. If you have a vinyl top with a valance, then the vinyl top would wrap around the underside of the rear window.



**Center Deck** - The distance between the roof top seams measuring from the center of left seam (driver side) to the center of right seam (passenger side).



### COLOR CODES & YEARS APPLICABLE

(01) Black (1970-1974)  
(02) White (1970-74)

(03) Antique Green (1970)  
(13) Green (1971-1973) **(L4)**

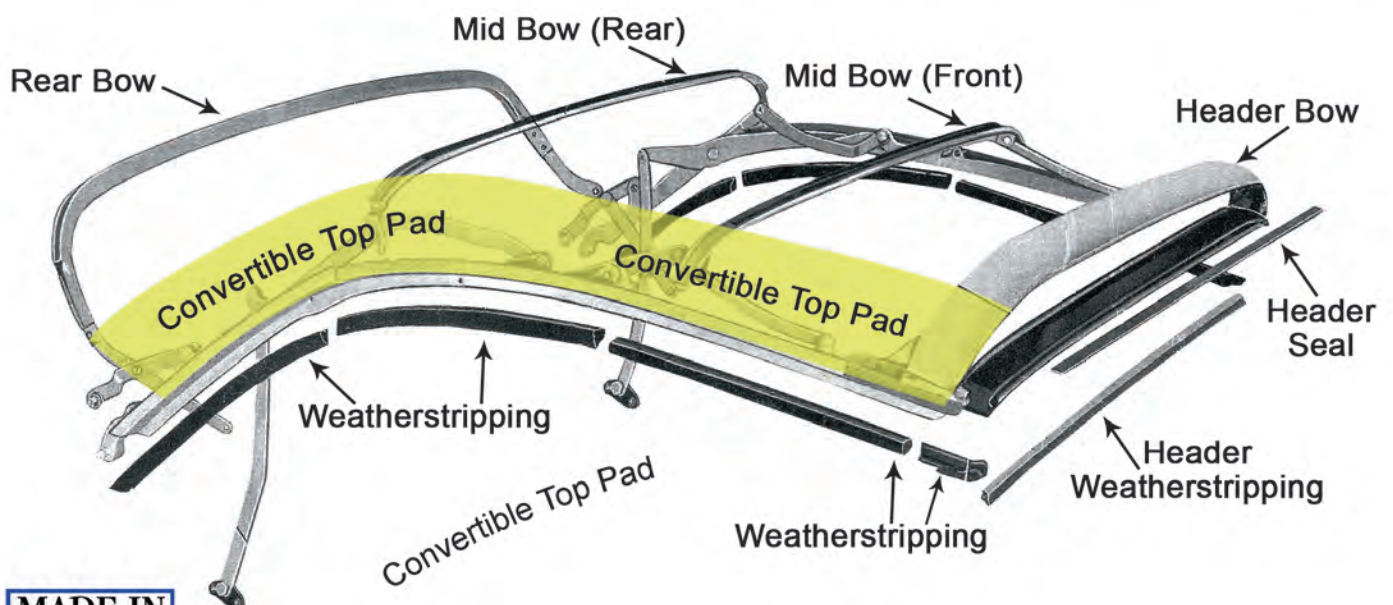




# CONVERTIBLE TOPS AND ACCESSORIES



Legendary Auto Interiors, Ltd. convertible tops are reproduced to factory original specifications. Convertible tops are available in original Crush "Colonial" grain (1970-71 models). Convertible tops are handcrafted using correct heavyweight 36oz. material. Rear window curtains are available in glass or plastic depending on year, make and model. We also have convertible tops available for most 1950 to present models. For colors other than black and white and models not listed, please call for assistance. As with all Legendary Auto Interiors, Ltd. products, these reproduction convertible tops are the finest available and come with a (2) year manufacturer's warranty (glass curtains come with (1) year warranty) against defects in materials and workmanship.

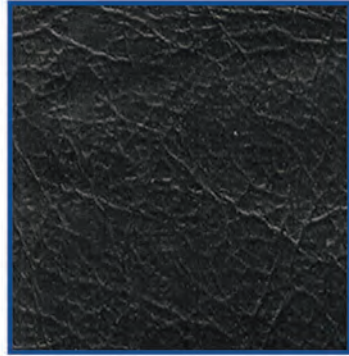


[www.legendariautointeriors.com](http://www.legendariautointeriors.com)



# Convertible Top Color Samples

## Crush Grain (1970-71)



**01 Black**

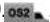


**02 White**

### CONVERTIBLE TOPS

**1970-71 Barracuda**  
**1970-71 Challenger**

**CT70CBJ(C)T** (Black and White only).... \$399.00/ea.

**CG70BJ(C)** (Glass curtain only)  \$399.00/ea.

**CTPAD70CBJ** (Top pad)..... \$79.00/pr.

### UNIVERSAL CONVERTIBLE TOP PADS



Universal convertible top pads fit between the top and metal frame rails, protecting the top from wear and damage. These will require some trimming but are a less expensive alternative to the OEM style. For the best possible fit, select your year specific OEM convertible top listed on this page. Convertible top pads are highly recommended with installation of new convertible tops.

**CTPAD74STD** .....\$79.00/pr.

### ANTI-RATTLE PLATES

These plates mount to the frame header to align the top when closing and help to prevent rattling when top in its up position.

**CT71E-ANTIRAT** (1971 E-Body)..... \$39.00/pr.





# CONVERTIBLE BOOTS

All E-Body convertible boots are sewn to original factory specifications, using original grain vinyls. 1970-71 boots use Coachman grain. Each boot includes the correct plastic clips or metal snaps and improved padding. Please specify year, make, model and color code at time of order. On two-tone colored interior models, the boot will always match the skirting material on the upholstery. Please refer to the upholstery section in this catalog for correct color code.



[www.legendariautointeriors.com](http://www.legendariautointeriors.com)



# Dodge & Plymouth E-Body

## CONVERTIBLE BOOTS

All E-Body convertible boots are sewn to original factory specifications, using original grain vinyls. 1970-71 boots use Coachman grain. Each boot includes the correct plastic clips or metal snaps and improved padding. Please specify year, make, model and color code at time of order. On two-tone colored interior models, the boot will always match the skirting material on the upholstery. Please refer to the upholstery section in this catalog for correct color code.



### 1970-71 Barracuda

CB70CB00017100 (Black).....	\$469.00/ea.
CB70CB00017154 (Charcoal) .....	\$469.00/ea.
CB70CB00017200 (White).....	\$469.00/ea.
CB70CB00017338 (Bright Blue) .....	\$469.00/ea.
CB70CB00017340 (Bright Blue) .....	\$469.00/ea.
CB70CB00017434 (Dk Met Green) ..	\$469.00/ea.
CB70CB00017452 (Metallic Green) ..	\$469.00/ea.
CB70CB00017540 (Burnt Orange) ...	\$469.00/ea.
CB70CB00017550 (Red).....	\$492.00/ea. (L4)
CB70CB00017656 (Brown).....	\$469.00/ea.
CB70CB00017664 (Brown).....	\$492.00/ea. (L4)
CB70CB00017666 (Ember Gold).....	\$469.00/ea.
CB70CB00017660 (Gold).....	\$729.00/ea. (L1)

### 1970-71 Challenger

CB70CJ00017100 (Black).....	\$469.00/ea.
CB70CJ00017200 (White) .....	\$469.00/ea.
CB70CJ00017338 (Bright Blue).....	\$469.00/ea.
CB70CJ00017340 (Bright Blue).....	\$469.00/ea.
CB70CJ00017434 (Dk Met Green) ...	\$469.00/ea.
CB70CJ00017452 (Metallic Green) ..	\$469.00/ea.
CB70CJ00017540 (Burnt Orange)....	\$469.00/ea.
CB70CJ00017550 (Red).....	\$492.00/ea. (L4)
CB70CJ00017656 (Brown) .....	\$469.00/ea.
CB70CJ00017664 (Brown) .....	\$492.00/ea. (L4)
CB70CJ00017666 (Ember Gold).....	\$469.00/ea.

## CONVERTIBLE BOOT CLIPS



Reproduction plastic clips that get sewn into the convertible top boot for attachment.

**CB70E-CLIP** (1970-71 E-Body).....\$5.00/ea.

## CONVERTIBLE BOOT DUST COVER

Protect your convertible boot when you remove it with this convertible boot dust cover made in Levant grain with a satin finish. Comes in Black only



## CONVERTIBLE WELL LINERS

Legendary Auto Interiors, Ltd. convertible top well liners for A & E-Body models are manufactured to original specifications with plastic strips and snaps (where applicable) for easy installation. The well liner installs behind the convertible rear seat protecting the top from damage when placed in the down position. Available in black for all years or in matching colors for 1963-65 model interiors.



### 1970-71 Barracuda

### 1970-71 Challenger

**WL70CBJ0016100** (Black)..... \$229.00/ea.

Available in black only.

## CONVERTIBLE BODY SCREW STUDS



5/8" Phillips head stainless steel body screw studs for snap down boot and well liner applications.

**CBBOOTBEZSCRW** (Pkg/35) .....\$16.00/pk.





1971 Plymouth Cuda










# WEATHERSTRIPING AND ACCESORIES

 [facebook.com/legendaryautointeriors](https://facebook.com/legendaryautointeriors)  
 [twitter.com/legendaryautoin](https://twitter.com/legendaryautoin)

 [www.legendaryautointeriors.com](https://www.legendaryautointeriors.com)  
 [instagram.com/legendaryautointeriorsltd](https://instagram.com/legendaryautointeriorsltd)  
 [youtube.com/user/legendaryauto](https://youtube.com/user/legendaryauto)



# Dodge & Plymouth E-Body

## BODY PLUG KITS



Complete body plug kits for floor pans, trunk pans and trunk extensions contain the correct size and style plugs in plastic or rubber depending on location and application of each year and model.

<b>1970 Challenger</b> BP70CJ	\$69.00/kit
<b>1970 Barracuda</b> BP70CB	\$69.00/kit
<b>1971-74 Challenger</b> <b>1971-74 Barracuda</b> BP71E	\$69.00/kit

## BODY BUMPER KITS

Complete body bumper kits for 1970-74 E-Body models. These kits include all of the body bumpers on your car from the hood to the trunk. Spring-loaded hood wedges are included in 1970-74 kits where applicable.



<b>1970 Challenger</b> BU70CJ-C	\$59.00/kit
<b>1970 Barracuda</b> BU70CB-C	\$59.00/kit
<b>1971 Challenger</b> BU71CJ-C	\$59.00/kit
<b>1971 Barracuda</b> BU71CB-C	\$59.00/kit
<b>1972-74 Challenger</b> BU72CJ-C	\$69.00/kit
<b>1972 &amp; 74 Barracuda</b> BU72CB-C	\$39.00/kit
☛ Spring loaded hood wedges <u>not</u> included in this kit.	
<b>1973 Barracuda</b> BU73CB-C	\$55.00/kit

## HOOD BUMPER KITS

Bumper kit includes all the necessary bumpers for under the hood of your car. (NOTE: Contents of this kit are also included in the complete body bumper kits)

<b>1970-74 Challenger</b> BU70CJ-H	\$49.00/kit
<b>1970-71 &amp; 73 Barracuda</b> BU70CB-H	\$49.00/kit
<b>1972 &amp; 74 Barracuda</b> BU72CB-H	\$29.00/kit

## SPRING-LOADED HOOD BUMPERS

Spring-loaded hood bumpers for 1970-74 E-Body models. This wedge-shaped bumper keeps the hood in alignment.



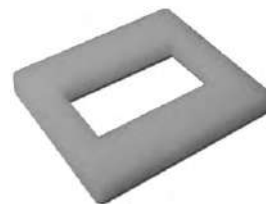
BU69WEDGE	\$15.00/ea.
-----------	-------------

## TRUNK BUMPER KIT

Rubber bumpers for 1970-74 E-Body models keeps the trunk lid in alignment. (NOTE: Contents of this kit are also included in the complete body bumper kits)

BU66ABTRNK	\$3.00/ea.
------------	------------

## ACCELERATOR GASKETS



Die-cut white foam gaskets install under the accelerator pedal to prevent water damage.

<b>1970-74 E-Body (all models)</b> GK70EB-ACCEL	\$6.00/ea.
--	------------

## DOOR HANDLE GASKETS



Die-cut door handle gaskets mount between the door handle and door.

<b>1970-74 E-Body (all models)</b> GK70E-DH (Plastic)	\$5.00/pr.
--	------------

## DOOR & TRUNK LOCK GASKETS



Gray plastic door and trunk lock gaskets for 1966-71 A & E-Body models mount between the lock mechanism and body.

GK66LOCKDT	\$5.00/kit
------------	------------

## WINDOW TRIM CLIPS



Trim clip kits include both front windshield and rear window clips (where applicable) for fastening trim molding. Mounting screws included.

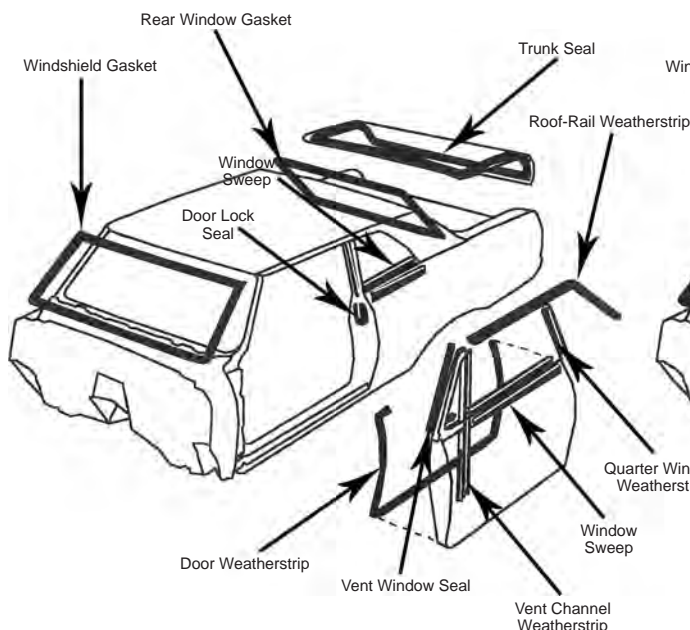
### E-BODY MODELS

<b>1970 Barracuda &amp; Challenger</b> WG70CBJ-CLIP (Hardtop)	\$59.00/kit
WG70CBJC-CLIP (Convertible)	\$39.00/kit
<b>1971-74 Barracuda &amp; Challenger</b> WG71CBJ-CLIP (Hardtop)	\$59.00/kit
WG70CBJC-CLIP (Convertible)	\$39.00/kit

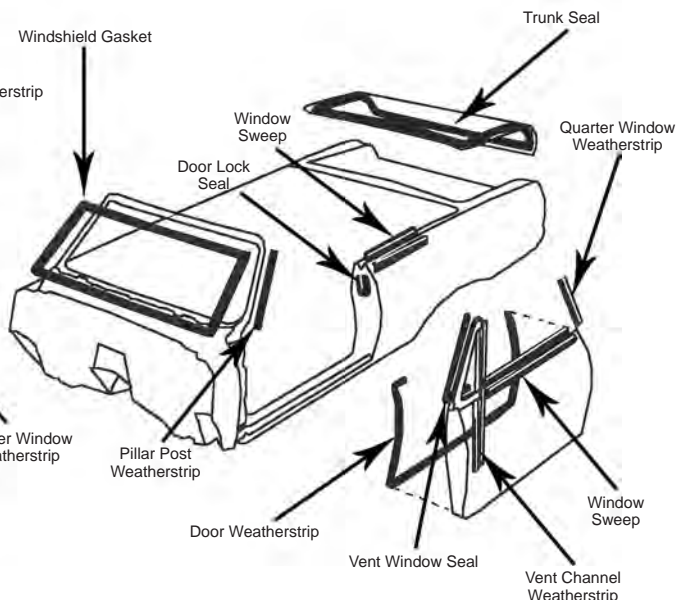




## HARDTOP / SEDAN WEATHERSTRIPPING



## CONVERTIBLE WEATHERSTRIPPING



### DOOR WEATHERSTRIPPING

Thick molded rubber weatherstrip includes the necessary clips and correct molded endpads for an excellent fit. These pieces wrap around the bottom and sides of each door.

**1970-74 E-Body (all models)**

**WS70C-EDOOR** (Hardtop/Conv.) .....\$159.00/pr.

### DOOR WEATHERSTRIPPING CLIPS



Plastic door weatherstripping kits replace missing or broken originals. For all 1970 and later models. (NOTE: These clips are replacements only and are already included with the door weatherstripping shown above)

**WS63CDOORCLIPS** (22/pkg)..... \$15.00/pk.

### DOOR END/LOCK SEAL SCREW



Black #8 door-end and door-lock 3/8" screw replaces broken or missing originals on all B & E-Body 2-door models.

**WS68DOORSCREW** (10/pkg) .....\$10.00/pk.

### DOOR END SEALS



Molded rubber seals mount to end of the door next to the top of the door weatherstripping and are attached with screws.

**1970-74 E-Body (all models)**

**WS70C-EDOOREND** .....\$69.00/pr.

### DOOR LOCK SEALS



These molded rubber "U" shaped seals screw onto the door jamb pillar to seal the front edge of the rear-down windows.

**1970-74 E-Body (all models)**

**WS70C-EDOORLOCK** (shown).....\$79.00/pr.

### ROOF RAIL WEATHERSTRIPPING

Thick molded rubber with correct molded endpads. These start at the base of the windshield pillar post and follow along the outer edge of the roofline to the rear of the quarter window.

**1970 E-Body (all models)**

**WS70C-EROOF** (Hardtop) ..... \$159.00/pr.

**1971-74 E-Body**

**WS71C-EROOF** (Hardtop)..... \$159.00/pr.

### REAR QUARTER WINDOW SEALS

Rubber seals install into the chrome tracks located on the front edge of the quarter windows for some models and on the back edge of the door windows for others.

**1970 E-Body (all models)**

**WS70C-EQTR** (Hardtop & Conv.) ..... \$59.00/pr.

**1971-74 E-Body**

**WS71C-EQTR** (Hardtop & Conv.) ..... \$59.00/pr.

### TRUNK SEALS

Correct original profile extruded foam for hardtop and convertible models seals the trunk lid preventing water leaks.

**1970-72 E-Body (all models)**

**TS70CBI** (Hardtop & Convertible) .....\$29.00/ea.

**1973-74 E-Body (all models)**

**TS73CBI** (Hardtop).....\$49.00/ea.



# Dodge & Plymouth E-Body

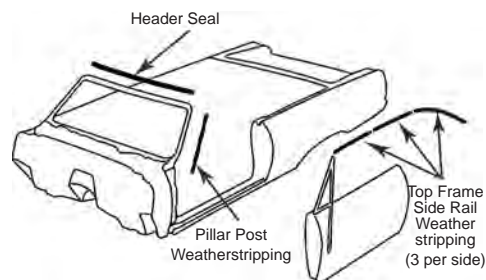
## CHRYSLER "V-FOAM" TRUNK SEAL



Extruded "V" shape foam for all 1970-74 models seals the trunk lid preventing water leaks. Please measure original seal for correct footage when ordering.

**TS63VFOAM**.....\$6.00/ft.

## CONVERTIBLE TOP FRAME WEATHERSTRIPPING



### HEADER SEALS

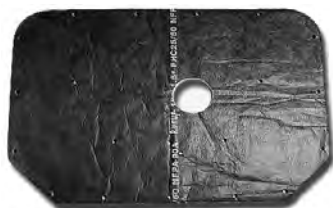
Rubber header seal runs along the front of the top and seals against the top of the windshield.

**1970-71 E-Body (all models)**

**WS70CBJHS**.....\$89.00/ea.

### HOOD PAD INSULATION

Die-cut reproductions of the original hood insulation pads ready to install. Clips not included.



**1970-74 Barracuda & Challenger**

**HP70CBJX** (requires 20 clips) .....\$43.00/ea.

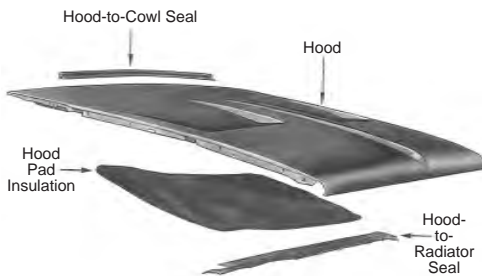
### MOLDED HOOD PAD

These pads are molded to the shape of the hood as original. Due to size of these hood pads, they are shipped oversize.



**1970-74 E-Body (all models)** <sup>OS3</sup>

**HP70CBJXM** (requires 20 clips) .....\$125.00/ea.



## HOOD-TO-COWL SEALS



This rubber piece seals to the underside of the hood to the front edge of the cowl.

**1970-74 E-Body (all models)**

**WS70C-EHOOD**.....\$19.00/ea.

**WS70C-EHOOD1** (w/ clips installed) ...\$99.00/ea.

## HOOD-TO-RADIATOR SEALS



Correctly formed and shaped rubber strip that seals the hood to the radiator core support.

**1970-71 E-Body (all models)**

**WS70CBJ-HR** (w/ clips installed) .....\$139.00/ea.

**1972-74 E-Body (all models)**

**WS72CBJ-HR** (w/ clips installed) .....\$89.00/ea.

## METAL HOOD PAD CLIPS



1970-71

Reproductions of the original stamped metal hood pad clips for all 1970-71 models.

**HPCLIP-M** (1970-71).....\$3.00/ea.

## PLASTIC HOOD PAD CLIPS



Reproduction plastic hood pad clips for all 1972 and later models.

**HPCLIP-P**.....\$1.00/ea.

## WINDOW SWEEP KITS

Reproduction window sweep kits consist of felt-lined pieces for sealing the side glass to the door or quarter panel. Reproduced as close to original as possible, each kit is model specific and includes the chrome or black metal backing strip. Available in 4 piece kits (outer sweeps only) or complete 6, 8 and 10 piece kits (inner and outer sweeps).



**1970 Challenger**

**WS70WX19208** (Conv.) (8 pc.) .....\$189.00/kit

**WS70WX21304** (Conv.) (4 pc.) .....\$125.00/kit

**WS70WX19708** (HTP) (8 pc.) .....\$189.00/kit

**WS70WX21004** (HTP) (4 pc.) .....\$125.00/kit

**1970 Barracuda**

**WS70WX19308** (Conv.) (8 pc.) .....\$189.00/kit

**WS70WX21404** (Conv.) (4 pc.) .....\$125.00/kit

**WS70WX11608** (HTP) (8 pc.) .....\$189.00/kit

**WS70WX21204** (HTP) (4 pc.) .....\$125.00/kit

**1971 Challenger**

**WS71WX19408** (Conv.) (8 pc.) .....\$179.00/kit

**WS71WX21504** (Conv.) (4 pc.) .....\$119.00/kit

**WS71WX19808** (HTP) (8 pc.) .....\$189.00/kit

**WS71WX21104** (HTP) (4 pc.) .....\$125.00/kit

**1971 Barracuda**

**WS71WX19408** (Conv.) (8 pc.) .....\$179.00/kit

**WS71WX21504** (Conv.) (4 pc.) .....\$119.00/kit

**WS71WX15108** (HTP) (8 pc.) .....\$189.00/kit

**WS71WX21304** (HTP) (4 pc.) .....\$125.00/kit

**1972-74 Challenger**

**WS71WX19808** (HTP) (8 pc.) .....\$189.00/kit

**WS71WX21104** (HTP) (4 pc.) .....\$125.00/kit

**1972-74 Barracuda**

**WS71WX15108** (HTP) (8 pc.) .....\$189.00/kit

**WS71WX21304** (HTP) (4 pc.) .....\$125.00/kit



# ORDERING INFORMATION

## HOW TO ORDER

**MAIL, PHONE OR FAXES** – When ordering by mail, please fill in all information on the order form that pertains to your vehicle. Print all information and include a telephone number where you can be reached during the day and evening. When ordering for more than one vehicle, please use separate order forms for each vehicle (see order forms in your Legendary Auto Interiors catalog). When ordering by phone, please have your customer number and a list of items ready. You may order conveniently by phone 8:00AM to 6:00PM EST Monday-Friday. Orders may also be sent in by fax 24 hours a day, 7 days a week. Please note that orders faxed in on Saturday or Sunday will not be received and processed until Monday. FAX: 1-800-732-8874

**ON-LINE ORDERING** – Legendary Auto Interiors, Ltd also offers convenient and easy on-line ordering 24 hours a day, 7 days a week at [www.legendaryautointeriors.com](http://www.legendaryautointeriors.com). Click on the “Shop Online” tab in the options menu and follow the ordering procedures. Upon completion, Legendary Auto Interiors, Ltd will follow up with an email confirmation so you can verify that your order has been received correctly and is being processed. You may also choose to email your orders by contacting our sales department at [sales@legendaryautointeriors.com](mailto:sales@legendaryautointeriors.com).

## METHODS OF PAYMENT

**CREDIT CARDS** – Legendary Auto Interiors, Ltd accepts Visa, MasterCard, American Express and Discover for your convenience. Please include the cardholder’s name, billing address, home and business phone, credit card number, expiration date and the 3 or 4 digit security code when placing your orders. Without this information it may slow the processing of your order.

**CHECKS AND MONEY ORDERS** – Personal Checks will be held 5 business days. To expedite your orders, we suggest paying by Certified Bank Check or Money Order. COD orders are no longer accepted. All payments MUST be in U.S. funds.

## SHIPPING SERVICES

**DOMESTIC SHIPPING** - Legendary Auto Interiors Ltd utilizes both UPS and FedEx Ground for most U.S. parcel shipments which provides our customers the most efficient and cost effective shipping services available. We will ship by the best method for your geographic area unless otherwise specified. We also offer specialized shipping services such as 3 day Select, 2nd day air and Next Day Air for your convenience.

**INTERNATIONAL SERVICES** – We use the most current and most cost effective international parcel shipping companies available to provide both “Door to Airport” and “Door to Door” services to our overseas customers. We utilize UPS Canadian and FedEx International for Canadian shipments. This provides us with the best possible shipping and brokerage fees for our international customers.

## DAMAGES AND SHORTAGES

The carrier is responsible for any merchandise lost or damaged in transit. **Should a package appear to be damaged, OPEN the package while the carrier’s driver is present and note all damages and/or shortages.** If this is not possible and you discover damaged goods or shortages, contact our Customer Service Department immediately! Damages and/or shortage claims must be made within 5 days of receipt of merchandise to ensure our ability to file a claim with the carrier. Please be sure to check all merchandise when you receive it and again before attempting installation.

Legendary Auto Interiors, Ltd. is committed to providing the highest possible level of customer service, however on rare occasions circumstances beyond our control can result in lost or damaged packages. To protect our customers against delays and having to make time consuming phone calls to the carrier, orders will incur a modest \$2.50 insurance fee on each shipment. In the event any products become lost or damaged we will then send replacement parts as quickly as possible, subject to material availability. We will also file the claims and deal with the carrier.

Carriers allow a short period of time to file claims. To take advantage of this service you must notify Legendary Auto Interiors, Ltd. of any damages within 5 days of receiving your delivery. Failure to contact us within this 5 day window will negate Legendary Auto Interiors further involvement.

## RETURN POLICY

Legendary Auto Interiors Ltd. will accept returns within the first 30 days of the original invoice date. All items returned within the first 30 days will be subject to a restocking fee of 20-25% depending on item. No returns will be accepted after 30 days. Custom, Special Orders, Specialty Run Materials, Leather and NOS are not eligible for return under any circumstances other than a manufacturing defect. If any product is modified, altered, painted, installed or disassembled in any way without Legendary’s expressed written permission, the item is non-returnable. Legendary always recommends professional installation on all products. Any item which has been altered, painted, installed or deemed non-resalable by Legendary will be returned to the customer at the customer’s expense. Legendary is not responsible or liable for labor fees associated with the installation, modification or repair of any product purchased regardless of the circumstances.

## RETURN GOOD INFORMATION

All returns must receive prior approval and an RMA (Return Merchandise Authorization) number prior to return shipping. Packages received by Legendary Auto Interiors Ltd. without prior approval and RMA number will be refused. Return shipping and insurance are the customer’s responsibility. All returned items must be received in as new condition. Examples that render a product non-returnable include, but are not limited to: evidence of attempted installation, parts that have been bent, broken, creased, scratched, soiled, melted or discolored. Also, we will not accept returns for any items that have been altered, painted, repaired or for any reason that has rendered the product non-resalable. Warning: Legendary is not responsible for damaged or lost packages returned by the customer.

## CANADIAN CUSTOMER RETURNS

Warranty returns must be clearly marked as follows: **“U.S. GOODS BEING RETURNED FOR REPAIR OR REPLACEMENT UNDER WARRANTY COMMODITY CODE 9801:00V0”**.

## PRICES

All prices effective January 1st, 2026 and are subject to change without notice.

## HOURS

Monday – Friday 8:00AM to 5:30PM (Eastern Standard Time)

Saturday - By appointment only please

# IMPORTANT ADDITIONAL INFORMATION

## WARRANTY INFORMATION

Legendary Auto Interiors, Ltd proudly stands behind all of the products and services we offer. All Legendary manufactured sewn interior soft trim products are backed by an exclusive **Limited Lifetime Warranty** for as long as you own your car. In addition, we offer a 5-year warranty on all of our molded, die-electrically heat sealed and exterior soft trim products. Legendary Auto Interiors, Ltd also offers a huge selection of interior components, which we warranty for a maximum of 1 year in accordance with the original manufacturers product warranty. **Product Disclaimer: Normal wear from use or problems due to improper installation are excluded from any warranty.**

## LEGENDARY GUARANTEE

All Legendary Auto Interiors, Ltd manufactured products are made to original specifications and are guaranteed to fit. In the event that you experience a problem with any of our products or are dissatisfied with our service, we will make every effort to resolve and correct your issue promptly and do our best to make sure that you are completely satisfied.

## INTERIOR COLORS/GRAINS

Legendary Auto Interiors, Ltd offers one of the most diverse product lines available in the marketplace. We feature the correct "color matched" and "grain matching" materials for nearly all models and styles. Due to the extensive number of colors produced by Chrysler, AMC and General Motors, there are some colors, which are simply not available in reproduction form. As the demand for colors increases, we are constantly having previously unavailable colors reproduced. In the event that a vinyl or cloth is not available in reproduction form, the use of NOS material may be required. Please inquire for a current quote, as the price and availability of these NOS materials will vary. To ensure a correct color and grain match, your interior trim code may be required for verification. As color dye lots will vary, we recommend purchasing all your soft trim components at the same time to ensure an exact color match of all components throughout your interior. **Color and grain samples are available upon request at no charge.**

## LEATHER INTERIORS

Legendary Auto Interiors, Ltd produces a large number of "as original" leather interiors that are color matched to the original. Special order custom leather interiors are also available upon request. Some applications may require a clean, non-faded sample to ensure the closest possible color match. Leather interior orders may require additional lead-time as well as additional costs, which will be quoted at time of your order. **Note: Due to the variable nature of real leather, minor marks and features are normal and add to the character & individuality of leather products.**

## CUSTOM ORDERS

In addition to "As Original" reproduction interiors, Legendary Auto Interiors, Ltd specializes in and is proud to feature "CUSTOM" interiors servicing the Resto-Mod enthusiast. With the introduction of our new & exclusive ~~Legend Interiors~~ product, custom orders have taken on an entirely new look and have given enthusiasts almost limitless options to create a one of a kind interior. Special Order and Custom interiors require approval for all designated materials being used and a signature approval on a "Custom Order" form is also required. Once the Custom work has been approved these orders must be prepaid and are Non-Returnable, Non-Refundable and Non-Cancelable.

## INSTALLATION NOTES

Since age deteriorates certain areas of seats due to wear patterns and foam breakdown, certain adjustments and foam repair may be required to complete a perfect fit installation. For this reason, we recommend having a professional automotive interior trim/upholstery shop install your new Legendary Auto Interiors, Ltd soft trim products. As the manufacturer, we know how to install our products better than anyone and we offer complete installation services for both seat upholstery and door panels. For further information, see the **INSTALLATION GUIDE** included with your seat upholstery and door panels or the installation page of this catalog.

## PRODUCT DEVELOPMENT & PATTERNS NEEDED

In an effort to develop new upholstery kits, door panels and other soft trim products we work hand in hand with many of our customers who provide their original parts for product development. These items must be ORIGINAL, in fair to good condition and have not been previously repaired or replaced in any way. Our Sales Department must be contacted directly before sending your old upholstery or other soft trim products to us. Since we have no idea about the usability of your parts until we receive them in, you may initially be asked to send photos in an effort to identify the condition of your original parts. Please remember that even if you send in your parts for inspection, we may not be able to use them. **PLEASE NOTE THAT OLD UPHOLSTERY AND OTHER SOFT TRIM ITEMS CANNOT BE RETURNED TO YOU, AS THEY WILL BE DISMANTLED FOR DEVELOPMENT USE.**

## MAINTENANCE

All Legendary Auto Interiors, Ltd products may be cleaned with a mild soap and warm water solution. Never scrub or use any kind of harsh pads, brushes or detergents. After cleaning with mild soap and water, lightly clean again with an industrial grade wax and grease remover. (Contact your local auto parts store) Allow surface to dry. LIGHTLY mist with the vinyl protectant of your choice. Install your new parts into your cruising machine. Sit back, enjoy the ride and drive safely!! Note: On leather upholstery applications we recommend using a high-quality mink oil, neatsfoot oil and/or wax. Hand apply, let stand 30-60 minutes and then wipe /buff clean. LIGHTLY rub your soft trim product with oil and wipe excess oil from the surface. **DO NOT USE SILICONE BASED PRODUCTS** as they will deteriorate the thread and dry out leather.



# INSTALLATION SERVICES

## GM, CHRYSLER & AMC SEAT UPHOLSTERY

*(Includes tear down of original upholstery and installation of new upholstery)*



Front Buckets Install - \$500.00/pr.  
(No Headrest Covers)



Front Buckets w/ Headrest Covers Install - \$600.00/pr.



Front Split Bench Install - \$575.00/ea.



Front Split Bench w/ Headrest Covers Install - \$675.00/ea.



Rear Bench Seat Install - \$400.00/ea.



Headrest Covers Install - \$150.00/pr.

Center Armrest Install - \$150.00/ea.  
(for models w/ buckets and no console)



## SAVE ON COMPLETE FRONT & REAR INSTALLS!!

Front Buckets & Rear Bench Seat Install - \$750.00/set

Front Buckets w/ Headrest Covers & Rear Bench Seat Install - \$850.00/set

Front Split Bench & Rear Bench Seat Install - \$825.00/set

Front Split Bench w/ Headrest Covers & Rear Bench Seat Install - \$925.00/set

*\*NOTE\* Basic installations DO NOT include new foam and cotton replacement or reconstruction, media blasting, painting, welding, frame straightening, polishing or trim detailing. These services are additional and available at an hourly rate. Please call for more details. **1-800-363-8804***

# INSTALLATION SERVICES

## GM, CHRYSLER & AMC DOOR PANELS

### Basic Door Panel Installation

*(Includes installation of metal rails and window weatherstrip)*

*\*Convertible rear panel installation DOES NOT include ashtray/well covers*

*\*Ashtray/well covers for General Motors models are available. Call for details*



Front Panels (Pair Only) - \$250.00/pr.



Hardtop/Convertible Rear Panels (Pair Only) - \$250.00/pr.

**Complete Front & Rear Panels (Pairs Only) - \$500.00/pr.**

### Deluxe Door Panel Installation

*(Includes installation of metal rails, window weatherstrip, metal trim and decorative emblems)*

*\*Convertible rear panel installation DOES NOT include ashtray/well covers*

*\*Ashtray/well covers for General Motors models are available. Call for details*



Front Panels (Pair Only) - \$400.00/pr.



Hardtop/Convertible Rear Panels (Pair Only) - \$325.00/pr.

**Complete Front & Rear Panels (Pairs Only) - \$725.00/pr.**

## DOOR PANEL REFURBISHMENT

*If we do not list your particular year/make/model vehicle, Legendary Auto Interiors, Ltd. can refurbish your panels back to original for you. The following refurbishing rates include installation of new panels (on your original metal rails), inner window weatherstripping, metal trim and decorative emblems. Please call for instructions before shipping your door panels.*

Front Panels (Pair Only) - \$750.00/pr.

Hardtop/Convertible Rear Panels (Pair Only) - \$500.00/pr.

Complete 2-Door Front & Rear Panels (Pairs Only) - \$1250.00/set

Complete 4-Door Front & Rear Panels (Pairs Only) - \$1250.00/set

*\*NOTE\* Custom refurbishing does not include the refinishing of metal trim and decorative emblems. We highly recommend this work is done before sending the panels.*



# SHIPPING/HANDLING RATE CHART

Order Value \$	Flat Rate	Oversize Charges	Rate
.01-40	\$11	OS1	\$26
41-100	\$23	OS2	\$51
101-200	*\$34	OS3	\$75
201-400	*\$43	*On all orders over \$100 *NYS Customers - Sales tax will be added *AK, HI, PR & International customers call for shipping *Next Day, 2nd Day & 3 Day Select shipping, please call for rates	
401-600	*\$58		
601-800	*\$78		
801-1000	*\$113		
1001-1250	*\$165		
1251-1500	*\$172		
1501-1850	*\$216		
1851-2100	*\$259		
2101-2500	*\$296		
2501-2999	*\$334		
3000-up	*\$370		
*Includes \$3.50 for insurance			

Oversize Items	Classification	Oversize Items	Classification
Package Tray	OS1	Molded Headliners	OS3
Trunk Divider	OS1	Molded Hood Pads	OS3
Plastic Door Panels	OS1	Pick Up Seat Back Kits	OS3
Pre-Assembled Door Panels	OS1	GM Bench Seat Foam	OS3
2nd Gen F-Body Door Panels	OS1	E-Body Dash Pads/Caps	OS3
Consoles	OS1	Trunk Packages	OS3
Bucket Molded Foam	OS1		
Install Kits 2-4, 12-15	OS1		
Vinyl Yardage (1yd & up)	OS1		

Oversize Items	Classification
C-Body Carpet Kits	OS2
62-65 B Body Mopar Carpet Kits	OS2
64-69 Cuda Fastback Carpet Kits	OS2
66-67 Charger Fastback Carpet Kits	OS2
Carpet Yardage	OS2
Sound Dampeners	OS2
Firewall Insulation	OS2
Convertible Glass	OS2
Install Kit 5	OS2

# 2026 TENTATIVE SHOWS AND DATES

**Spring Carlisle**  
**Chryslers @ Carlisle**  
**Fall Carlisle**  
**SEMA**

**Carlisle, PA**  
**Carlisle, PA**  
**Carlisle, PA**  
**Las Vegas, NV**

**April 22 - 26, 2026**  
**July 10 - 12, 2026**  
**Sept 30 - Oct 4, 2026**  
**November 3 - 6, 2026**

Legendary Auto Interiors Ltd. welcomes the opportunity to support the smaller clubs' and organizations' car shows and swap meets. A variety of flyers, catalogs and gift certificates are available to clubs and organizations who sponsor shows nationwide. Please call or write for additional information. The list above is a tentative schedule subject to change without notice. Come visit us at many car shows/swap meets and see what makes a Legendary interior... truly Legendary.



**Legendary**  
**AUTO INTERIORS LTD.**



## Table of Contents

### **SEAT UPHOLSTERY & TRIM ACCESORIES 1-8**

Bucket Seat Catch.....	8
Bucket Seat Hinge Washer .....	8
Center Armrest Hinge Washer.....	8
Hinge Covers.....	8
Front Shoulder Harness .....	8
Plastic Seatback Covers.....	8
Seat Belt Guide .....	8
Seat Spring Kits.....	7
Seat Stops.....	8
Upholstery .....	2-6

### **MOLDED FOAM & FOAM ACCESORIES 9-12**

Cotton Rolls.....	10
High Density Foam .....	10
Hog Ring Plier Kits .....	10
Molded Foam.....	11-12
Seat Upholstery Installation Kits.....	10

### **DOOR PANELS & TRIM ACCESORIES 13-15**

Armrest Pads.....	15
Ash Trays.....	15
Door Handles.....	15
Door Panels.....	14
Door Panel Carpet Trim.....	15
Door Panel Woodgrain .....	15
Window Cranks .....	15
Window Crank Screws .....	15
Window Crank Spacers.....	15

### **CARPETS, FLOORMATS & ACCESORIES 17-28**

Carpet.....	20
Carpet Yardage .....	20
Firewall Insulation.....	20
Floormats.....	24-28
Jute Backing .....	20
Kick Panels.....	20
Kick Panel Insulation .....	20
Sill Plates.....	20
Sound Deadener .....	20

### **DASHES, CONSOLES, SHIFTERS & ACCESORIES 29-31**

Choke Applique .....	30	"Shaker" Under Dash Cable .....	30
Dash Pad Speaker Grill.....	30	"Shaker" Under Hood Cable .....	30
Glove Box Liners .....	31	Shifter Bezels .....	31
HEMI Choke Cable.....	30	Shifter Boots.....	31
Pedal Pads .....	31	Shifter Knobs.....	31
Pedal Pad Bezels .....	31	Underdash Insulation.....	30
Pillar Post Moldings.....	30	Vent Cables .....	30
Pistol Grip Shifter & Lens .....	31	Woodgrain Console Inserts .....	30
		Woodgrain Dash Inserts .....	30

## Table of Contents

### **HEADLINERS & TRIM ACCESORIES 33-37**

Dome Light Lens .....	35
Foam Backed Cloth Headliner.....	35
Headliners .....	35
Headliner Bow Retaining Clips .....	35
Headliner Insulation.....	35
Sail Panels.....	35
Sunvisors.....	37
Sunvisor Tips.....	37

### **PACKAGE TRAY & TRUNK ACCESORIES 38-39**

Package Trays & Jute Insulation .....	38
Spare Tire Cover .....	39
Trunk Dividers & Insulation.....	39
Trunk Mats.....	39
Trunk Mat Material.....	39

### **VINYL TOPS, CONVERTIBLE TOPS & TRIM 40-46**

Anti Rattle Plates .....	44
Convertible Body Screw Studs .....	46
Convertible Boots .....	46
Convertible Boot Clips .....	46
Convertible Boot Dust Cover .....	46
Convertible Tops.....	44
Convertible Top Pads .....	44
Convertible Well Liners.....	46
Vinyl Tops .....	42

### **WEATHERSTRIPPING & ACCESORIES 47-50**

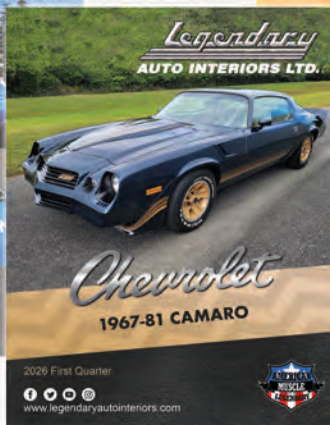
Accelerator Gaskets .....	48	Door Weatherstripping.....	49	Molded Hood Pad.....	50
Body Bumper Kits.....	48	Door Weatherstripping Clips.....	49	Pillar Post Weatherstripping .....	50
Body Plug Kits .....	48	Header Seals.....	50	Rear Quarter Window Seals.....	49
Conv. Top Frame Weatherstripping .....	50	Hood Bumper .....	48	Roof Rail Weatherstripping.....	49
Door End Seals .....	49	Hood Bumper Kits .....	48	Trunk Bumper Kits .....	48
Door End/Lock Seal Screw.....	49	Hood Pad Clips.....	50	Trunk Seals .....	49-50
Door Handle Gaskets .....	48	Hood Pad Insulation .....	50	Window Sweep Kits.....	50
Door Lock Seals .....	49	Hood-to-Cowl Seals.....	50	Window Trim Clips.....	48
Door & Trunk Lock Gaskets.....	48	Hood-to-Radiator Seals .....	50		





## WE'RE NOT JUST CHRYSLER ANYMORE!

1964-72 CHEVELLE/EL CAMINO, GTO/LEMANS, CUTLASS/442 & SKYLARK/GS  
1970-72 MONTE CARLO, 1970-72 NOVA & 1967-81 CAMARO & FIREBIRD



[WWW.LEGENDARYAUTOINTERIORS.COM](http://WWW.LEGENDARYAUTOINTERIORS.COM)



Legendary Auto Interiors, Ltd.  
121 West Shore Blvd  
Newark, NY 14513

# We're Social!

-  [facebook.com/legendaryautointeriors](https://facebook.com/legendaryautointeriors)  [youtube.com/user/legendaryauto](https://youtube.com/user/legendaryauto)
-  [x.com/legendaryautoin](https://x.com/legendaryautoin)  [instagram.com/legendaryautointeriorsltd](https://instagram.com/legendaryautointeriorsltd)



**LEGENDARY AUTO INTERIORS**  
**1-800-363-8804**  
**WWW.LEGENDARYAUTOINTERIORS.COM**